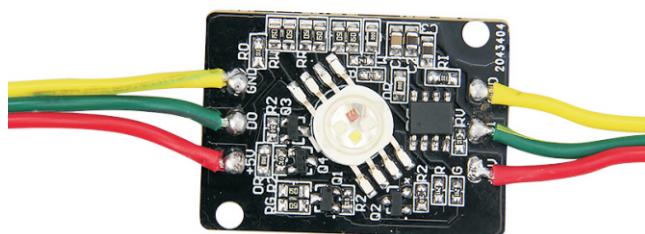


P032 RGBW Digital LED Module

◆ Product Description:



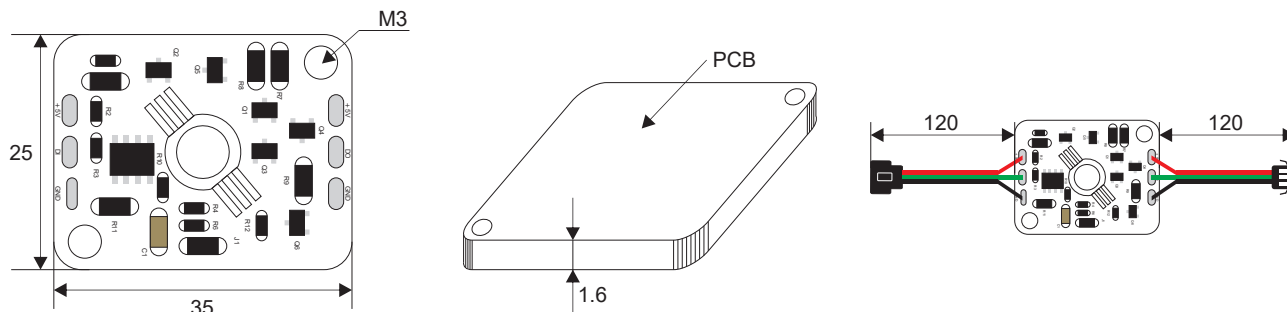
This is a super bright RGB LED mounted on a Aluminum board backside without a 3M stick suggested to install on any plate for heat dissipation, 2 pcs M3 mounting hole on each conner SM16714 IC control ,it's working with any SPI controller or a DMX decoder constant voltage working, there are 3 pads on each side of board do not confuse the Data in and Data out each module contains a pair of JST connector and packed by An-ti static bag



◆ Product parameter

Product Number	P032001MA4SD6	Luminance/pcs	R:51 G:76 B:20 W:102lm
Voltage	DC5V	Ra	≥ 80
Power/pcs	4W	Beam Angle	140°
SMD Type	Imitation Lumen	Size (mm)	35 * 25mm
LED Qty/pcs	1	IP Rate	IP20
Color	RGBW: 6000K	Operation Temperature	- 25 ~ 60 °C
Pixel/pcs	1	Material	Aluminum plate
Control	SPI / SM16714	Cutting Length	/
Wavelength	R:620-625 G:520-525 B:460-465NM	Net Weight/pcs	0.01Kg

◆ Outline Dimension (unit: mm)



◆ Order number

DC5V	RGBW+3000K	Black PCB	IP20	P032001MA4SD6/C1
DC5V	RGBW+4000K	Black PCB	IP20	P032001MA4SD6/C2
DC5V	RGBW+6000K	Black PCB	IP20	P032001MA4SD6/C3

Note: The parameters are subject to change without notice!