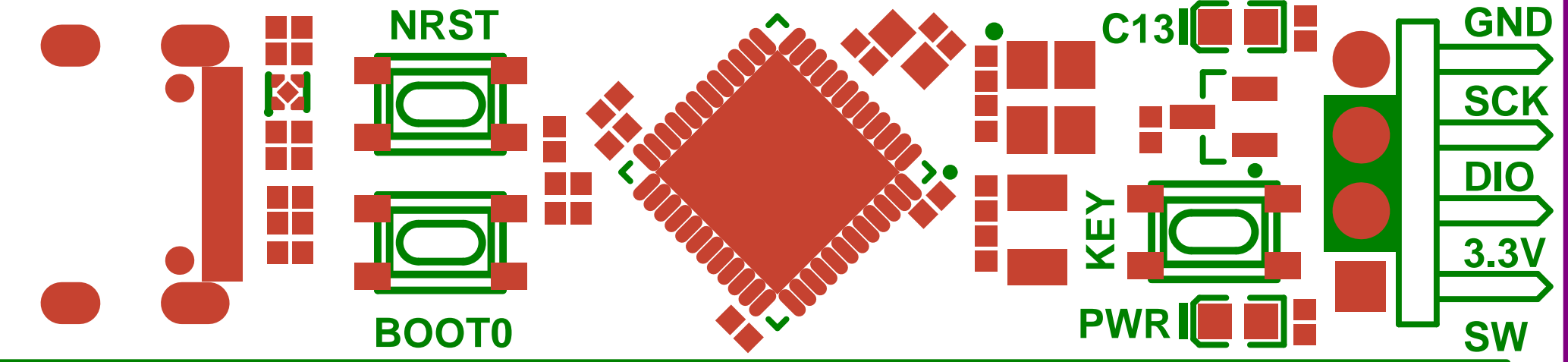


52.81mm

20.78mm

5V G 3.3 B10 B2 B1 B0 A7 A6 A5 A4 A3 A2 A1 A0 R C15 C14 C13 VB



B12 B13 B14 B15 A8 A9 A10 A11 A12 A15 B3 B4 B5 B6 B7 B8 B9 5V G 3.3