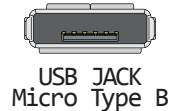


feather

M0 AdaLogger

<https://www.adafruit.com/product/2796>

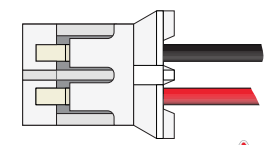
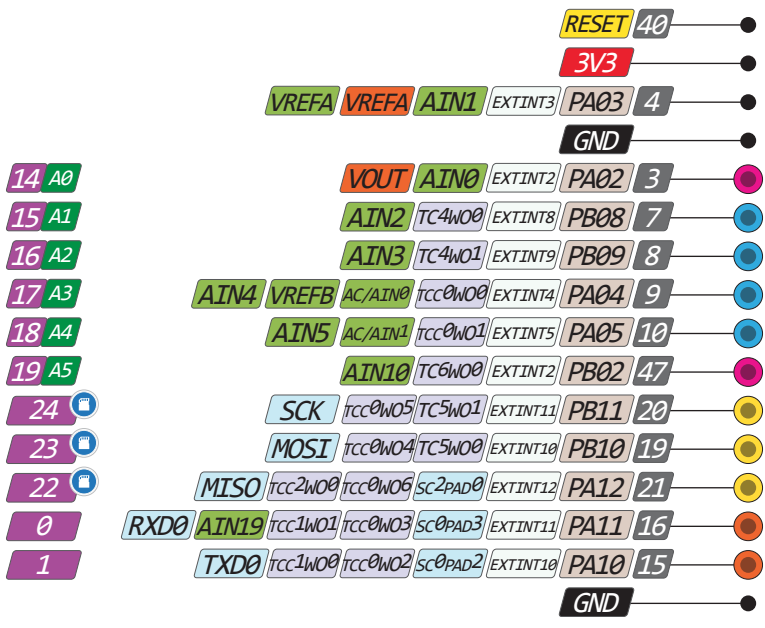
- Power
- GND
- Serial Pin
- Analog Pin
- Control
- INT
- Physical Pin
- Port Pin
- Pin function
- Interrupt Pin
- DAC
- PWM Pin
- Connected to SD
- Port Power



13	PA08	NMI	SC0PAD0	AIN16	TC0W00	TCC1W02	4	CS
30	PA21	EXTINT5	SC5PAD3	TC7W01	TCC0W07		7	CD
11	PA06	EXTINT6	SC1PAD1	AC/AIN2	AIN7	TCC1W00	8	

■ SD Card control

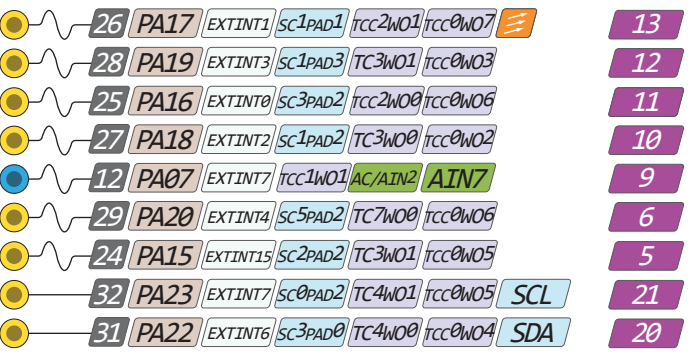
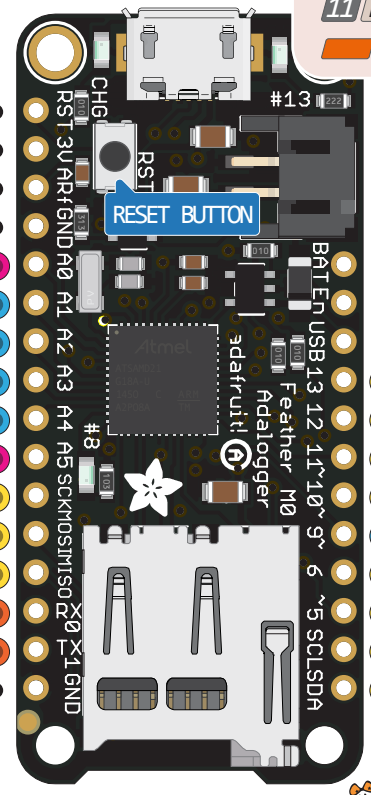
Can't go higher than 3.3V! ■ VREFA



Optional Lipoly Battery

- VBAT 3.7V → 4.2V
- En Connect to ground to disable the 3.3V regulator
- VBUS

The power sum for each pin's group should not exceed 65mA



The output from 3.3V Regulator ■ 3V3
Absolute MAX 400mA

■ VBUS It's connected to 5V USB
Absolute MAX 500mA

■ VBAT It's the positive voltage from/to the JST batt jack

Absolute MAX per pin 10mA
recommended 7mA

Absolute MAX 130mA
for entire package