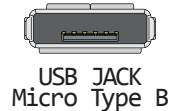


# feather

## 32u4 Basic Proto

<https://www.adafruit.com/product/2771>

- Power
- GND
- Serial Pin
- Analog Pin
- Control
- INT
- Physical Pin
- Port Pin
- Pin function
- Interrupt Pin
- ~ PWM Pin
- ● ● Port Power ⚠



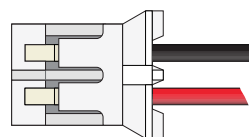
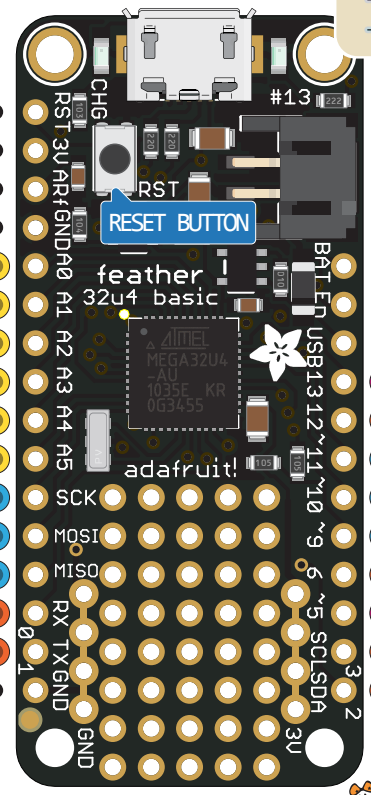
**PWM TYPE**

- ~ 10bit
- ~ 8/16bit
- ~ HS
- ~ 16bit
- ~ 8bit

Can't go higher than 3.3V! ⚠

- 18 A0
- 19 A1
- 20 A2
- 21 A3
- 22 A4
- 23 A5
- 15
- 16
- 14
- 0
- 1

- RESET 13
- 3V3
- AREF 42
- GND
- ADC7 TDI PF7 36
- ADC6 TD0 PF6 37
- ADC5 TMS PF5 38
- ADC4 TCK PF4 39
- ADC1 PF1 40
- ADC0 PF0 41
- SCLK PCINT1 PB1 9
- MOSI PCINT2 PDI PB2 10
- MISO PCINT3 PDO PB3 11
- RXD1 INT2 PD2 20
- TXD1 INT3 PD3 21
- GND



Optional Lipoly Battery

- VBAT ⚠ 3.7V → 4.2V
- En ⚠ Connect to ground to disable the 3.3V regulator
- VBUS

- 32 PC7 ICP3 CLK0 OC4A
- 26 PD6 T1 OC4D ADC9
- 12 PB7 PCINT7 OC1C OC0A RTS
- 30 PB6 PCINT6 OC1B OC4B ADC13
- 29 PB5 PCINT5 OC1A OC4B ADC12
- 27 PD7 T0 OC4D ADC10
- 31 PC6 OC3A OC4A
- 18 PD0 INT0 OC0B SCL
- 19 PD1 INT1 SDA
- 13
- 12 A11
- 11
- 10 A10
- 9 A9
- 6 A7
- 5
- 3
- 2

The output from 3.3V Regulator  
Absolute MAX 400mA V3V3

VBUS It's connected to 5V USB  
Absolute MAX 500mA

⚠ Absolute MAX per pin 20mA  
recommended 10mA

VBAT It's the positive voltage  
from/to the JST batt jack

⊘ Absolute MAX 200mA  
for entire package

