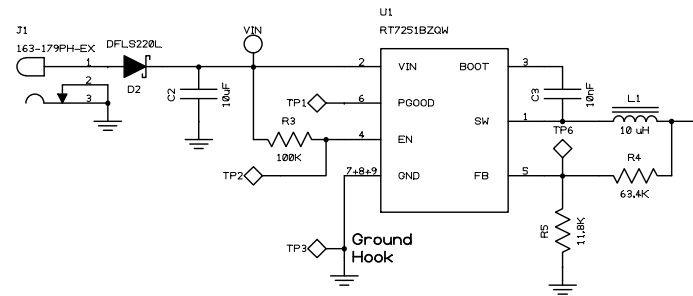
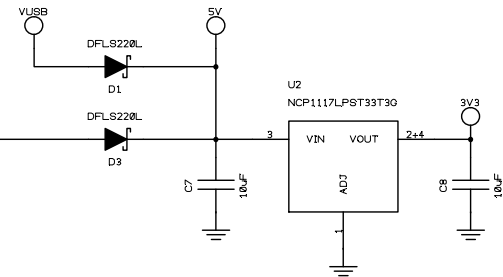


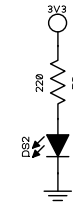
### 5V 1.5A Power Supply



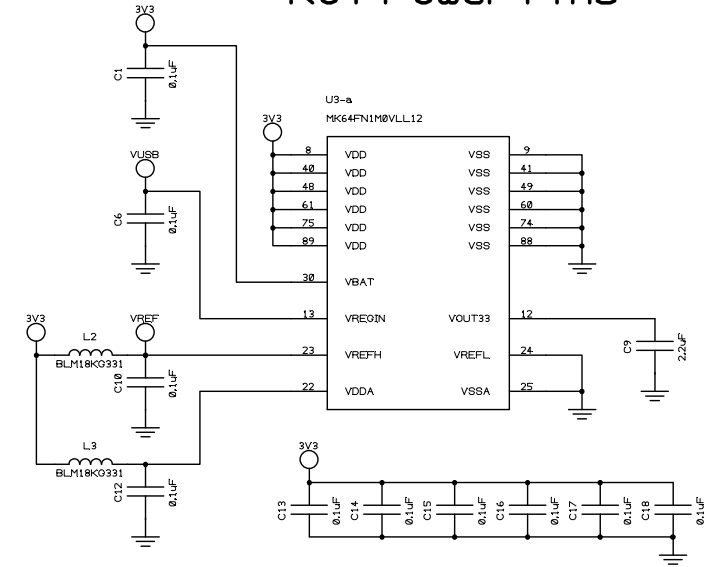
### 3.3V 1A Power Supply



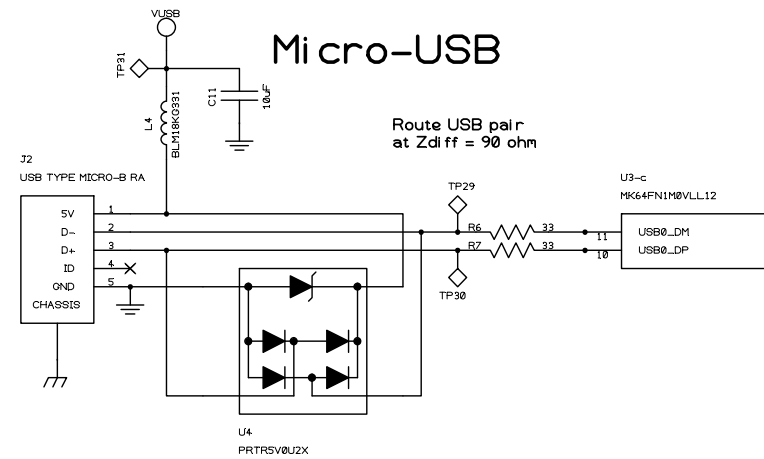
### Power LED



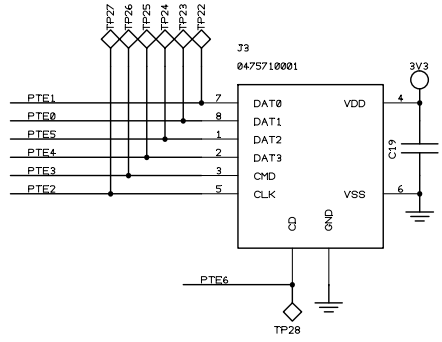
### K64 Power Pins



### Micro-USB



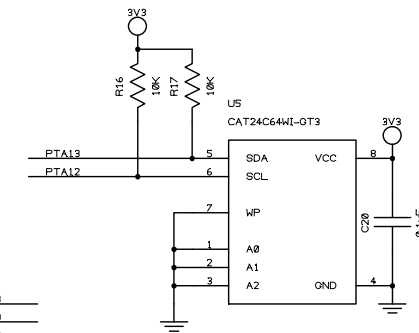
### Micro-SD



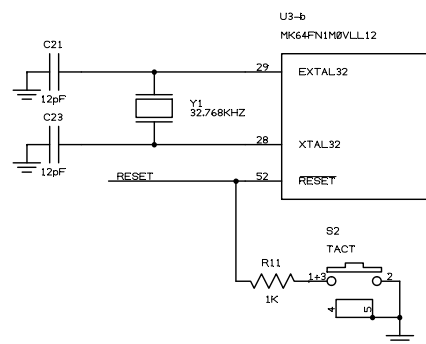
### Status LED



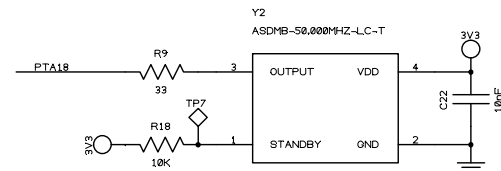
### 64Kbit I2C EEPROM



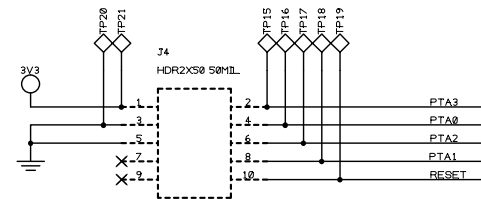
### K64 Crystal/Reset



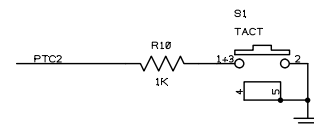
### K64 50MHz Oscillator



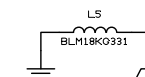
### JTAG/SWD



### Program Switch



### Chassis Bonding

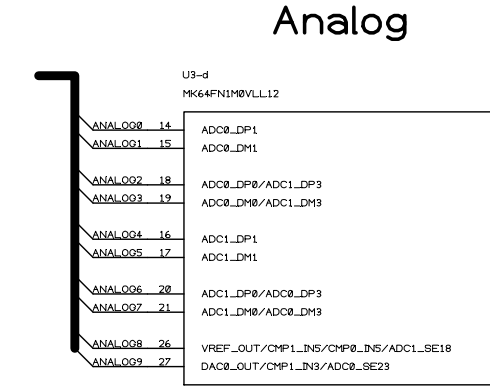
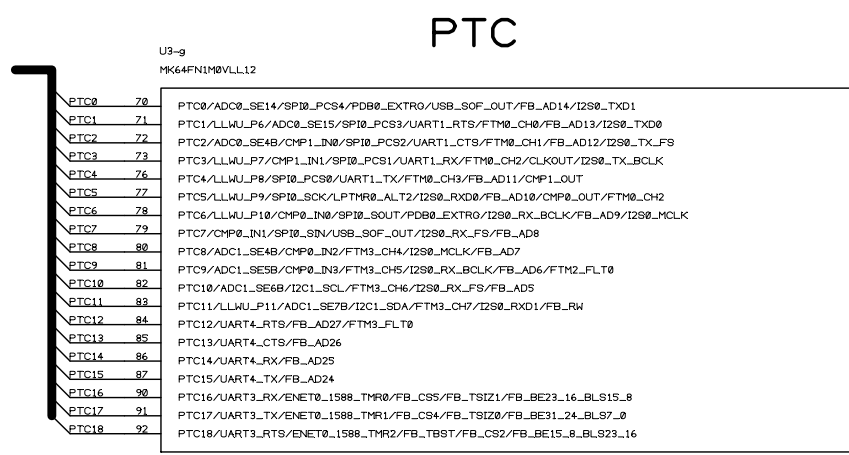
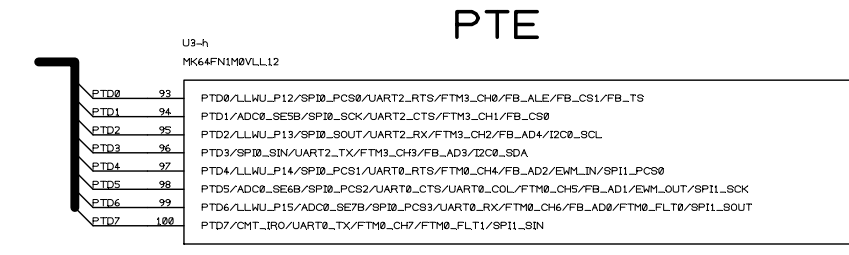
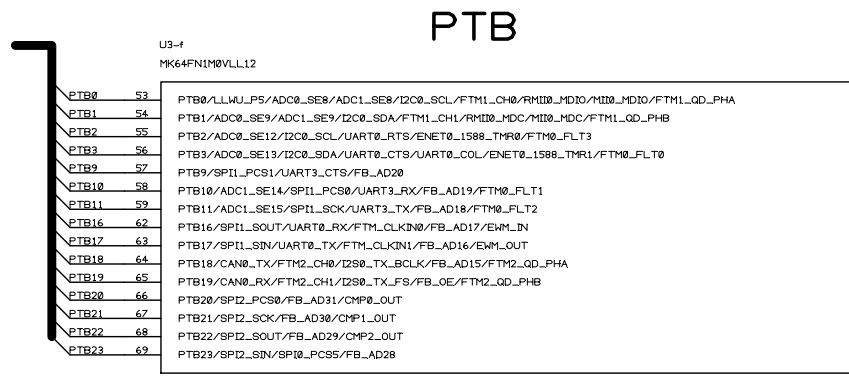
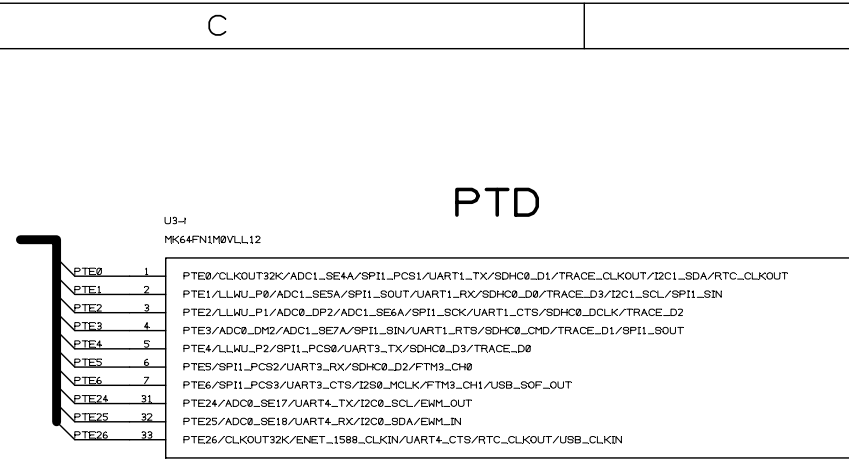
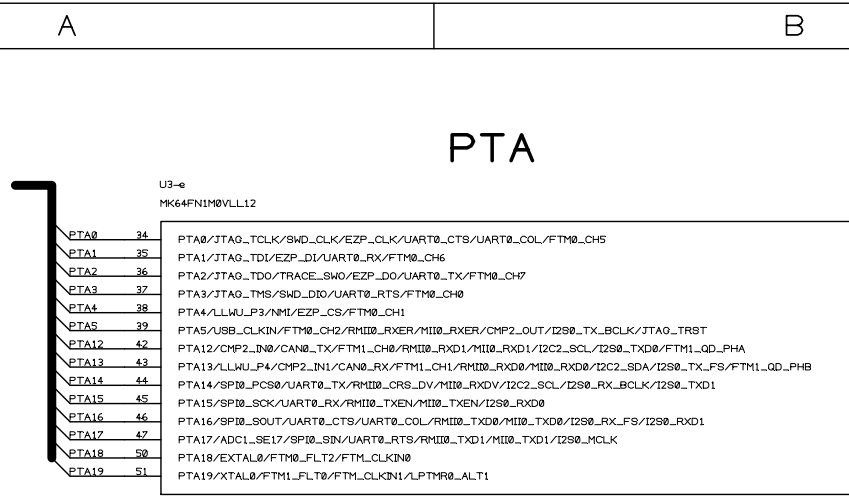


### Unused Pins

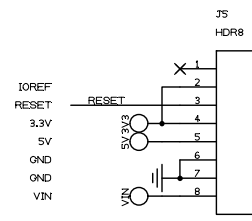


### Esquilo Corp.

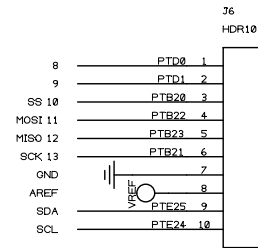
|                    |  |                     |              |
|--------------------|--|---------------------|--------------|
| TITLE: Esquilo Air |  | VARIANT: Production |              |
| PAGE: System       |  | DATE: 11/19/2014    | REV: A1      |
| AUTHOR: Scott      |  | SIZE: B             | SHEET 1 OF 4 |



### Ardui no Power

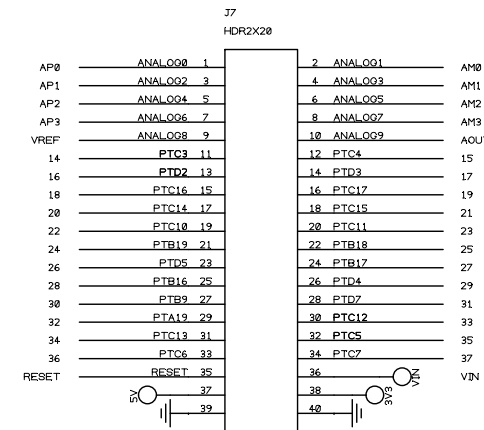


### Ardui no Di gi tal 2



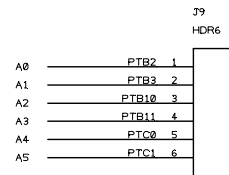
| PIN | NAME  | PERIPH | SIGNAL |
|-----|-------|--------|--------|
| 8   | PTD0  | FTM3   | CH0    |
| 9   | PTD1  | FTM3   | CH1    |
| 10  | PTB20 | SP12   | CS0    |
| 11  | PTB22 | SP12   | SOUT   |
| 12  | PTB23 | SP12   | SIN    |
| 13  | PTB21 | SP12   | SCK    |
| 14  | PTE25 | I2C0   | DA     |
| 15  | PTE24 | I2C0   | CL     |

### Shell Connector



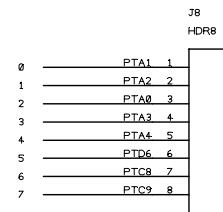
| PIN | NAME  | PERIPH | SIGNAL |
|-----|-------|--------|--------|
| 22  | PTC3  | UART1  | RX     |
| 23  | PTC4  | UART1  | TX     |
| 24  | PTD2  | UART2  | RX     |
| 25  | PTD3  | UART2  | TX     |
| 26  | PTC16 | UART3  | RX     |
| 27  | PTC17 | UART3  | TX     |
| 28  | PTC14 | UART4  | RX     |
| 29  | PTC15 | UART4  | TX     |
| 30  | PTC10 | I2C1   | CL     |
| 31  | PTC11 | I2C1   | DA     |
| 32  | PTB19 | CAN    | RX     |
| 33  | PTB18 | CAN    | TX     |
| 34  | PTD5  | SP11   | SCK    |
| 35  | PTB17 | SP11   | SN     |
| 36  | PTB16 | SP11   | SOUT   |
| 37  | PTD4  | SP11   | CS0    |
| 38  | PTB9  | SP11   | CS1    |
| 39  | PTD7  | FTM0   | CH7    |
| 40  | PTA19 | FTM    | CLKIN1 |
| 41  | PTC12 | OP10   |        |
| 42  | PTC13 | OP10   |        |
| 43  | PTC5  | CHP0   | OUT    |
| 44  | PTC6  | CHP0   | IN0    |
| 45  | PTC7  | CHP0   | IN1    |

### Ardui no Analog



| PIN | NAME  | PERIPH | SIGNAL |
|-----|-------|--------|--------|
| 16  | PTB2  | ADC0   | SE12   |
| 17  | PTB3  | ADC0   | SE13   |
| 18  | PTB10 | ADC1   | SE14   |
| 19  | PTB11 | ADC1   | SE15   |
| 20  | PTC0  | ADC0   | SE14   |
| 21  | PTC1  | ADC0   | SE15   |

### Ardui no Di gi tal



| PIN | NAME | PERIPH | SIGNAL |
|-----|------|--------|--------|
| 0   | PTA1 | UART0  | RX     |
| 1   | PTA2 | UART0  | TX     |
| 2   | PTA0 | FTM0   | CH5    |
| 3   | PTA3 | FTM0   | CH0    |
| 4   | PTA4 | FTM0   | CH1    |
| 5   | PTD6 | FTM0   | CH6    |
| 6   | PTC8 | FTM1   | CH4    |
| 7   | PTC9 | FTM1   | CH5    |

**Esquilo Corp.**

TITLE: Esquilo Air

Production

PAGE: Shell

DATE: 11/19/2014 REV: A1

AUTHOR: Scott

SIZE: B SHEET 3 OF 4

A B C D

1

1

2

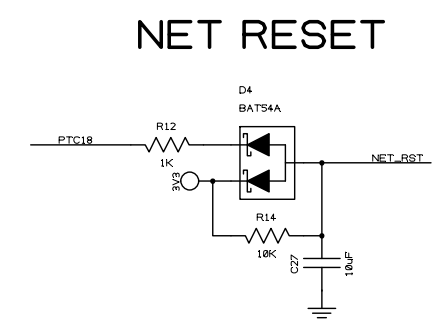
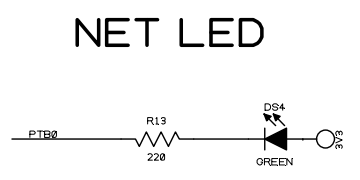
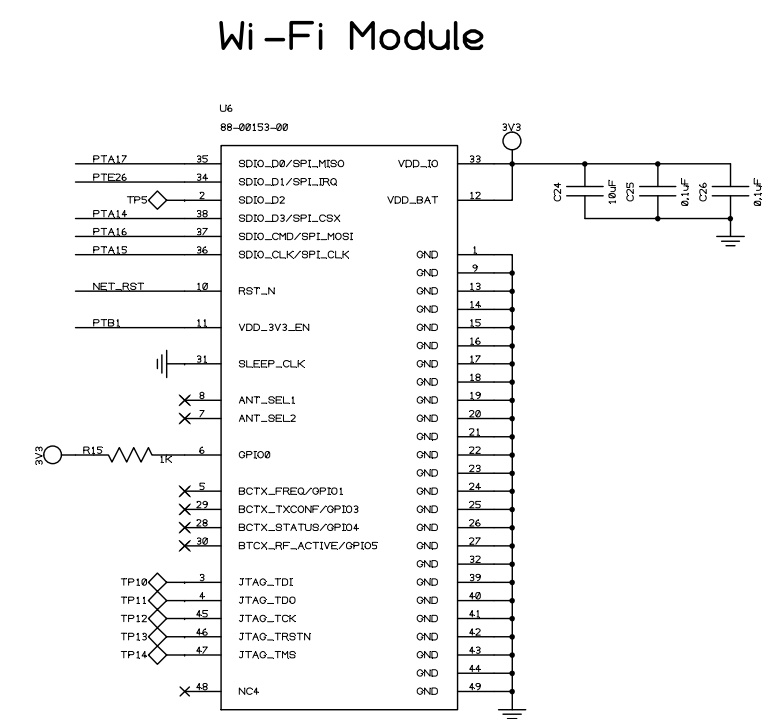
2

3

3

4

4



|                      |                  |              |  |
|----------------------|------------------|--------------|--|
| <b>Esquilo Corp.</b> |                  |              |  |
| TITLE: Esquilo Air   |                  | Production   |  |
| PAGE: Network        | DATE: 11/19/2014 | REV: A1      |  |
| AUTHOR: Scott        | SIZE: B          | SHEET 4 OF 4 |  |

A B C D