



DAT-P-162/04-00

# TEST REPORT

REPORT NUMBER: I13GC9474-SAFETY

Type of Equipment: GSM/GPRS(850/900/1800/1900MHz)+BT

Wireless Data Module

Type of designation: SIM800H

Manufacturer:Shenyang Simcom Technology Ltd.

EN 60950-1:2006+A11:2009+A1:2010+A12:2011

Information technology equipment –

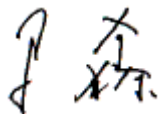
Safety – Part 1: General requirements

China Telecommunications Technology Labs

Month date, year

Aug. 22, 2013

Signature



Ma Xing

Director

<p><b>TEST REPORT</b></p> <p><b>EN 60950-1:2006+A11:2009+A1:2010+A12:2011</b></p> <p><b>Information technology equipment – Safety – Part 1: General requirements</b></p>
<p><b>Report No</b> ..... : I13GC9474-SAFETY</p> <p>Tested by (printed name and signature): </p> <p>Approved by (printed name and signature): </p> <p>Date of issue ..... : Aug.22, 2013</p> <p>Contents ..... : 53 pages test report</p>
<p><b>Testing laboratory</b></p> <p>Testing Laboratory name ..... : China Telecommunication Technology Labs.(CTTL)</p> <p>Address ..... : No.11 Yue Tan Nan Jie, Beijing, P.R.C</p>
<p><b>Client</b></p> <p>Applicant's Name.....: Shanghai SIMCom Wireless Solutions Co.,Ltd.</p> <p>Address .....: Building A, SIM Technology Building, No.633, Jinzhong Road, Changning District, Shanghai R.R.China</p>
<p><b>Manufacturer:</b></p> <p>Applicant's Name.....: Shenyang Simcom Technology Ltd.</p> <p>Address .....: No.37, Shenbei Rd, Shenbei New Aear, Shenyang, P.R.China</p>
<p><b>factory</b></p> <p>Applicant's Name.....: N/A</p> <p>Address .....: N/A</p>
<p><b>Test item</b></p> <p>Test item description .....: GSM/GPRS(850/900/1800/1900MHz)+BT Wireless Data Module</p> <p>Model and/or type reference .....: SIM800H</p> <p>IMEI.....: 860719020043216</p> <p>Hardware Version.....: V1.02</p> <p>Software Version.....: SIM800 R13.08</p> <p>Rating(s) .....: Class III</p> <p>Date equipment was received.....: August 15, 2013</p> <p>Date of test.....: From August 15, 2013 to August 22, 2013</p> <p>Place of test.....: CTTL Beijing P.R.C</p>

Equipment mobility:	<input type="checkbox"/> movable equipment	<input type="checkbox"/> hand-held equipment
	<input type="checkbox"/> stationary equipment	<input type="checkbox"/> transportable equipment:
	<input type="checkbox"/> direct plug-in equipment	<input checked="" type="checkbox"/> equipment for building in
Operating ways:	<input checked="" type="checkbox"/> continuous operation	<input type="checkbox"/> short-time operation
IT power distribution systems test:	<input type="checkbox"/> Yes	<input checked="" type="checkbox"/> No
IT power distribution systems test, phase-phase voltage:	(v)	
Classes of equipment:	<input type="checkbox"/> Class I equipment	<input type="checkbox"/> Class II equipment
	<input checked="" type="checkbox"/> Class III equipment	
Mass of equipment(kg):	<1 kg	
Altitude during operation(m):	<2000m	
Altitude of test laboratory(m):	<2000m	
Degree of protection against ingress of water.:Assessment of IP protection class is not part of this report		
Test case verdicts		
— Test case does not apply to the test object	:	N
— Test item does meet the requirement	:	P
— Test item does not meet the requirement	:	F
Statement:		
Partial copy of this report is invalid. The test results included in this report refer to the equipment under test only. It is not permitted to transfer the results to other systems or configurations.		

## DESCRIPTION

Copy of marking plate and summary of test results (information /comments):

Marking label of the EUT



The equipment submitted for tests is a GSM/GPRS(850/900/1800/1900MHz)+BT Wireless Data Module  
The type of theModule is SIM800H.

EN 60950-1			
Clause	Requirement - Test	Result-Remark	Verdict

1	GENERAL		P
---	---------	--	---

1.5	Components		P
1.5.1	General	See below	P
	Comply with IEC 60950 or relevant component standard	(see appended table 1.5.1)	P
1.5.2	Evaluation and testing of components	Components not covered by IEC standards are tested under the conditions present in the equipment.	P
1.5.3	Thermal controls	No such component	N
1.5.4	Transformers	No such component	N
1.5.5	Interconnecting cables	Interconnecting cable is carrying only SELV and energy level below 240VA.	P
1.5.6	Capacitors bridging insulation	No such component	N
1.5.7	Resistors bridging insulation	No such component	N
1.5.7.1	Resistors bridging functional, basic or supplementary insulation	No such bridging Resistors.	N
1.5.7.2	Resistors bridging double or reinforced insulation between a.c. mains and other circuits	No such component	N
1.5.7.3	Resistors bridging double or reinforced insulation between a.c. mains and antenna or coaxial cable	No such component	N
1.5.8	Components in equipment for IT power systems	Not for IT power distribution systems.	N
1.5.9	Surge suppressors	No surge suppressors	N
1.5.9.1	General	.	N
1.5.9.2	Protection of VDRs		N
1.5.9.3	Bridging of functional insulation by a VDR		N
1.5.9.4	Bridging of basic insulation by a VDR		N
1.5.9.5	Bridging of supplementary, double or reinforced insulation by a VDR		N

EN 60950-1			
Clause	Requirement - Test	Result-Remark	Verdict

1.6	Power interface		N
1.6.1	AC power distribution systems	CLASS III Equipment	N
1.6.2	Input current	No connection to mains, power supplied by an adaptor	P
1.6.3	Voltage limit of hand-held equipment	Not more than 250V	N
1.6.4	Neutral conductor		N

1.7	Marking and instructions		P
1.7.1	Power rating and identification markings	Unit not provided with means for connection to mains	P
1.7.1.1	Power rating markings		N
	Multiple mains supply connections		N
	Rated voltage(s) or voltage range(s) (V) .....	No connect to Mains,rate is optional	P
	Symbol for nature of supply, for d.c. only.....		N
	Rated frequency or rated frequency range (Hz) .....		N
	Rated current (mA or A) .....	No connect to Mains,rate is optional	P
1.7.1.2	identification markings		P
	Manufacturer's name or trade-mark or identification mark .....	Shenyang Simcom Technology Ltd.	P
	Model identification or type reference .....	SIM800H	P
	Symbol for Class II equipment only .....	Class III equipment	N
	Other markings and symbols .....		N
1.7.2	Safety instructions and marking		P
1.7.2.1	General		N
1.7.2.2	Disconnect devices		N
1.7.2.3	Overcurrent protective device		N
1.7.2.4	IT power distribution systems	Not for IT power distribution systems	N

EN 60950-1			
Clause	Requirement - Test	Result-Remark	Verdict
1.7.2.5	Operator access with a tool		N
1.2.7.6	Ozone	Not possible because of Ozone.	N
1.7.3	Short duty cycles	Continuous operation.	N
1.7.4	Supply voltage adjustment .....	Single supply	N
1.7.5	Power outlets on the equipment .....	No power outlet used.	N
1.7.6	Fuse identification (marking, special fusing characteristics, cross-reference) .....	No fuse provided.	N
1.7.7	Wiring terminals		N
1.7.7.1	Protective earthing and bonding terminals .....		N
1.7.7.2	Terminals for a.c. mains supply conductors		N
1.7.7.3	Terminals for d.c. mains supply conductors		N
1.7.8	Controls and indicators	See below.	P
1.7.8.1	Identification, location and marking .....	Misuse of operational controls does not cause any hazard.	P
1.7.8.2	Colours .....	Not affecting safety.	N
1.7.8.3	Symbols according to IEC 60417.....	Power switch	N
1.7.8.4	Markings using figures .....	Not used.	N
1.7.9	Isolation of multiple power sources .....	Not for multiple power sources	N
1.7.10	Thermostats and other regulating devices .....	No such devices	N
1.7.11	Durability	The marking plate was subjected to the permanence of marking test. The marking plate was rubbed with cloth soaked with water for 15 s and then again for 15 s with the cloth soaked with petroleum spirit. After this test there was no damage to the marking. The marking on the label did not fade. There was no curling of the marking.	P
1.7.12	Removable parts		N
1.7.13	Replaceable batteries .....		N
	Language(s) .....		N
1.7.14	Equipment for restricted access locations .....		N

EN 60950-1			
Clause	Requirement - Test	Result-Remark	Verdict

2	PROTECTION FROM HAZARDS		P
2.1	Protection from electric shock and energy hazards		P
2.1.1	Protection in operator access areas	SELV circuits	P
2.1.1.1	Access to energized parts	I	N
	Test by inspection .....		N
	Test with test finger (Figure 2A) .....		N
	Test with test pin (Figure 2B) .....		N
	Test with test probe (Figure 2C) .....		N
2.1.1.2	Battery compartments		N
2.1.1.3	Access to ELV wiring	No ELV wirings.	N
2.1.1.4	Access to hazardous voltage circuit wiring		N
2.1.1.5	Energy hazards .....	No energy hazards	P
2.1.1.6	Manual controls	No manual controls.	N
2.1.1.7	Discharge of capacitors in equipment	Class III equipment	N
2.1.1.8	Energy hazards – d.c. mains supply	Not d.c. mains supply.	N
	a) Capacitor connected to the d.c. mains supply .....		N
	b) Internal battery connected to the d.c. mains supply .....		N
2.1.1.9	Audio amplifiers .....	No Audio amplifiers.	N
2.1.2	Protection in service access areas	No maintenance works in operation mode necessary.	N
2.1.3	Protection in restricted access locations	Not intended to be installed in restricted access locations	N

2.2	SELV circuits		P
2.2.1	General requirements		P
2.2.2	Voltages under normal conditions (V) .....	Limits of 42.4V peak and 60V DC are not exceeded	P



EN 60950-1			
Clause	Requirement - Test	Result-Remark	Verdict

2.2.3	Voltages under fault conditions (V) .....	Limits of 71V peak and 120V DC are not exceeded	P
2.2.4	Connection of SELV circuits to other circuits	only SELV	N

2.3	TNV circuits		N
2.3.1	Limits	No TNV-circuits	N
2.3.2	Separation from other circuits and from accessible parts		N
2.3.2.1	General requirements		N
2.3.2.2	Protection by basic insulation		N
2.3.2.3	Protection by earthing		N
2.3.2.4	Protection by other constructions .....		N
2.3.3	Separation from hazardous voltages		N
2.3.4	Connection of TNV circuits to other circuits		N
2.3.5	Test for operating voltages generated externally		N

2.4	Limited current circuits		N
2.4.1	General requirements	No Limited current circuits	N
2.4.2	Limit values		N
	Frequency (Hz) .....		N
	Measured current (mA) .....		N
	Measured voltage (V).....		N
	Measured circuit capacitance (nF or $\mu$ F) .....		N
2.4.3	Connection of limited current circuits to other circuits		N
2.5	Limited power sources		N
	a) Inherently limited output		N
	b) Impedance limited output		N
	c) Regulating network limited output under normal operating and single fault condition		N
	d) Overcurrent protective device limited output		N

EN 60950-1			
Clause	Requirement - Test	Result-Remark	Verdict
	Max. output voltage (V), max. output current (A), max. apparent power (VA) .....		—
	Current rating of overcurrent protective device (A)		—
	Use of integrated circuit (IC) current limiters	( see Annex CC )	—

2.6	Provisions for earthing and bonding		N
2.6.1	Protective earthing	Class III equipment.	N
2.6.2	Functional earthing		N
2.6.3	Protective earthing and protective bonding conductors		N
2.6.3.1	General		N
2.6.3.2	Size of protective earthing conductors		N
	Rated current (A), cross-sectional area (mm <sup>2</sup> ), AWG .....		N
2.6.3.3	Size of protective bonding conductors		N
	Rated current (A), cross-sectional area (mm <sup>2</sup> ), AWG .....		N
	Protective current rating(A), cross-sectional area (mm <sup>2</sup> ), AWG .....		N
2.6.3.4	Resistance of earthing conductors and their terminations; resistance (Ω), voltage drop (V), test current (A), duration (min) .....		N
2.6.3.5	Colour of insulation .....		N
2.6.4	Terminals		N
2.6.4.1	General		N
2.6.4.2	Protective earthing and bonding terminals		N
	Rated current (A), type, nominal thread diameter (mm).....		N
2.6.4.3	Separation of the protective earthing conductor from protective bonding conductors		N

EN 60950-1			
Clause	Requirement - Test	Result-Remark	Verdict
2.6.5	Integrity of protective earthing		N
2.6.5.1	Interconnection of equipment		N
2.6.5.2	Components in protective earthing conductors and protective bonding conductors		N
2.6.5.3	Disconnection of protective earth		N
2.6.5.4	Parts that can be removed by an operator		N
2.6.5.5	Parts removed during servicing		N
2.6.5.6	Corrosion resistance		N
2.6.5.7	Screws for protective bonding		N
2.6.5.8	Reliance on telecommunication network or cable distribution system		N

2.7	Overcurrent and earth fault protection in primary circuits		N
2.7.1	Basic requirements	Class III equipment	N
	Instructions when protection relies on building installation		N
2.7.2	Faults not simulated in 5.3.7		N
2.7.3	Short-circuit backup protection		N
2.7.4	Number and location of protective devices .....		N
2.7.5	Protection by several devices		N
2.7.6	Warning to service personnel .....		N

2.8	Safety interlocks		N
2.8.1	General principles	No safety interlocks	N
2.8.2	Protection requirements		N
2.8.3	Inadvertent reactivation		N
2.8.4	Fail-safe operation		N
2.8.5	Moving parts		N
2.8.6	Overriding		N
2.8.7	Switches and relays and their related circuits		N

EN 60950-1			
Clause	Requirement - Test	Result-Remark	Verdict
2.8.7.1	Separation distance for contact gaps and their related circuit (mm) .....		N
2.8.7.2	Overload test		N
2.8.7.3	Endurance test		N
2.8.7.4	Electric strength test		N
2.8.8	Mechanical actuators		N

2.9	Electrical insulation		P
2.9.1	Properties of insulating materials		P
2.9.2	Humidity conditioning	No hygroscopic materials available	N
	Relative humidity (%), temperature (°C) .....		N
2.9.3	Grade of insulation	Only functional insulation	P
2.9.4	Separation from hazardous voltages		N
	Method(s) used .....		N
2.10	Clearances, creepage distances and distances through insulation		N
2.10.1	General		N
2.10.1.1	Frequency .....		N
2.10.1.2	Pollution degrees .....		N
2.10.1.3	Reduced values for functional insulation		N
2.10.1.4	Intervening unconnected conductive parts		N
2.10.1.5	Insulation with varying dimensions		N
2.10.1.6	Special separation requirements		N
2.10.1.7	Insulation in circuits generating starting pulses		N
2.10.2	Determination of working voltage		N
2.10.2.1	General		N
2.10.2.2	RMS working voltage		N
2.10.2.3	Peak working voltage		N
2.10.3	Clearances		N
2.10.3.1	General		N

EN 60950-1			
Clause	Requirement - Test	Result-Remark	Verdict
2.10.3.2	Mains transient voltages		N
	a) AC mains supply .....	Class III equipment	N
	b) Earthed d.c. mains supplies .....	Not DC mains supplies.	N
	c) Unearthed d.c. mains supplies .....		N
	d) Battery operation .....		N
2.10.3.3	Clearances in primary circuits	Class III equipment	N
2.10.3.4	Clearances in secondary circuits		N
2.10.3.5	Clearances in circuits having starting pulses	Circuit does not generated starting pulses.	N
2.10.3.6	Transients from a.c. mains supply .....		N
2.10.3.7	Transients from d.c. mains supply .....		N
2.10.3.8	Transients from telecommunication networks and cable distribution systems .....		N
2.10.3.9	Measurement of transient voltage levels		N
	a) Transients from a mains supply		N
	For an a.c. mains supply .....		N
	For a d.c. mains supply .....		N
	b) Transients from a telecommunication network :		N
2.10.4	Creepage distances		N
2.10.4.1	General		N
2.10.4.2	Material group and comparative tracking index		N
	CTI tests.....		N
2.10.4.3	Minimum creepage distances		N
2.10.5	Solid insulation		N
2.10.5.1	General		N
2.10.5.2	Distances through insulation		N
2.10.5.3	Insulating compound as solid insulation		N
2.10.5.4	Semiconductor devices		N
2.10.5.5.	Cemented joints		N

EN 60950-1			
Clause	Requirement - Test	Result-Remark	Verdict
2.10.5.6	Thin sheet material – General		N
2.10.5.7	Separable thin sheet material		N
	Number of layers (pcs).....		N
2.10.5.8	Non-separable thin sheet material		N
2.10.5.9	Thin sheet material – standard test procedure		N
	Electric strength test		N
2.10.5.10	Thin sheet material – alternative test procedure		N
	Electric strength test		—
2.10.5.11	Insulation in wound components	No wound components.	N
2.10.5.12	Wire in wound components		N
	Working voltage .....		N
	a) Basic insulation not under stress .....		N
	b) Basic, supplementary, reinforced insulation .....		N
	c) Compliance with Annex U .....		N
	Two wires in contact inside wound component; angle between 45° and 90° .....		N
2.10.5.13	Wire with solvent-based enamel in wound components	No Such components.	N
	Electric strength test		N
	Routine test		N
2.10.5.14	Additional insulation in wound components		N
	Working voltage .....		N
	- Basic insulation not under stress .....		N
	- Supplementary, reinforced insulation .....		N
2.10.6	Construction of printed boards		N
2.10.6.1	Uncoated printed boards		N
2.10.6.2	Coated printed boards		N

EN 60950-1			
Clause	Requirement - Test	Result-Remark	Verdict
2.10.6.3	Insulation between conductors on the same inner surface of a printed board		N
2.10.6.4	Insulation between conductors on different layers of a printed board	Not such printed board.	N
	Distance through insulation		N
	Number of insulation layers (pcs) .....		N
2.10.7	Component external terminations		N
2.10.8	Tests on coated printed boards and coated components		N
2.10.8.1	Sample preparation and preliminary inspection		N
2.10.8.2	Thermal conditioning		N
2.10.8.3	Electric strength test		N
2.10.8.4	Abrasion resistance test		N
2.10.9	Thermal cycling		N
2.10.10	Test for Pollution Degree 1 environment and insulating compound		N
2.10.11	Tests for semiconductor devices and cemented joints		N
2.10.12	Enclosed and sealed parts		N

3	WIRING, CONNECTIONS AND SUPPLY		P
3.1	General		N
3.1.1	Current rating and overcurrent protection	Sufficient cross sectional area of internal wiring.	N
3.1.2	Protection against mechanical damage		P
3.1.3	Securing of internal wiring		P
3.1.4	Insulation of conductors		N
3.1.5	Beads and ceramic insulators	No such parts.	N
3.1.6	Screws for electrical contact pressure	No such screws	N
3.1.7	Insulating materials in electrical connections	No contact pressure transmitted over insulation materials.	N
3.1.8	Self-tapping and spaced thread screws	No such screws.	N

EN 60950-1			
Clause	Requirement - Test	Result-Remark	Verdict

3.1.9	Termination of conductors		N
	10 N pull test		N
3.1.10	Sleeving on wiring		N

3.2	Connection to a mains supply		N
3.2.1	Means of connection	Class III equipment, No connection to mains	N
3.2.1.1	Connection to an a.c. mains supply		N
3.2.1.2	Connection to a d.c. mains supply		N
3.2.2	Multiple supply connections		N
3.2.3	Permanently connected equipment	Not permanently connected equipment	N
	Number of conductors, diameter of cable and conduits (mm)		N
3.2.4	Appliance inlets	No appliance inlets provided.	N
3.2.5	Power supply cords	No power supply cords.	N
3.2.5.1	AC power supply cords		N
	Type		N
	Rated current (A), cross-sectional area (mm <sup>2</sup> ), AWG		N
3.2.5.2	DC power supply cords		N
3.2.6	Cord anchorages and strain relief		N
	Mass of equipment (kg), pull (N)		N
	Longitudinal displacement (mm)		N
3.2.7	Protection against mechanical damage		N
3.2.8	Cord guards		N
	Diameter or minor dimension D (mm); test mass (g)		N
	Radius of curvature of cord (mm)		N
3.2.9	Supply wiring space		N

3.3	Wiring terminals for connection of external conductors		N
3.3.1	Wiring terminals	No such terminals.	N
3.3.2	Connection of non-detachable power supply cords		N



EN 60950-1			
Clause	Requirement - Test	Result-Remark	Verdict

3.3.3	Screw terminals		N
3.3.4	Conductor sizes to be connected		N
	Rated current (A), cord/cable type, cross-sectional area (mm <sup>2</sup> )		N
3.3.5	Wiring terminal sizes		N
3.3.6	Wiring terminal design		N
3.3.7	Grouping of wiring terminals		N
3.3.8	Stranded wire		N

3.4	Disconnection from the mains supply		N
3.4.1	General requirement		N
3.4.2	Disconnect devices		N
3.4.3	Permanently connected equipment		N
3.4.4	Parts which remain energized		N
3.4.5	Switches in flexible cords		N
3.4.6	Number of poles - single-phase and d.c. equipment		N
3.4.7	Number of poles - three-phase equipment		N
3.4.8	Switches as disconnect devices		N
3.4.9	Plugs as disconnect devices		N
3.4.10	Interconnected equipment		N
3.4.11	Multiple power sources		N

3.5	Interconnection of equipment		P
3.5.1	General requirements		P
3.5.2	Types of interconnection circuits	SELV-SELV	P
3.5.3	ELV circuits as interconnection circuits		N
3.5.4	Data ports for additional equipment	No such Data ports.	N

4	PHYSICAL REQUIREMENTS		P
4.1	Stability	hand-held equipment	N
	Angle of 10°		N
	Test force (N) .....	Not a floor-standing unit	N

EN 60950-1			
Clause	Requirement - Test	Result-Remark	Verdict

4.2	Mechanical strength		P
4.2.1	General	Class III equipment	P
	Rack-mounted equipment	( see Annex DD )	N
4.2.2	Steady force test, 10 N	No hazard	N
4.2.3	Steady force test, 30 N	No doors or covers	N
4.2.4	Steady force test, 250 N	Applied in turn to front and rear of enclosure. No hazard.	P
4.2.5	Impact test		N
	Fall test		N
	Swing test		N
4.2.6	Drop test; height (mm) .....		N
4.2.7	Stress relief test		N
4.2.8	Cathode ray tubes	No CRTs.	N
	Picture tube separately certified .....		N
4.2.9	High pressure lamps	No such device	N
4.2.10	Wall or ceiling mounted equipment; force (N) .....	Not wall or ceiling mounted equipment	N
4.2.11	Rotating solid media		N
	Test to cover on the door .....		N

4.3	Design and construction		P
4.3.1	Edges and corners	The outer surface of the EUT is smoothed	P
4.3.2	Handles and manual controls; force (N) .....	No handles and manual controls	N
4.3.3	Adjustable controls	No such device	N
4.3.4	Securing of parts		N
4.3.5	Connection by plugs and sockets	Special connection for travel object of the test	P
4.3.6	Direct plug-in equipment	Direct plug-in equipment is not object of the test	N

EN 60950-1			
Clause	Requirement - Test	Result-Remark	Verdict
	Compliance with the relevant mains plug standard .....		N
4.3.7	Heating elements in earthed equipment	No heating elements.	N
4.3.8	Batteries		N
	Overcharging of a rechargeable battery		N
	Unintentional charging of a non-rechargeable battery		N
	Reverse charging of a rechargeable battery		N
	Excessive discharging rate for any battery		N
4.3.9	Oil and grease	No oil or grease inside the equipment.	N
4.3.10	Dust, powders, liquids and gases	Equipment intended use not considered to be exposed to these.	N
4.3.11	Containers for liquids or gases	No container for liquid or gas.	N
4.3.12	Flammable liquids .....	No flammable liquid.	N
	Quantity of liquid (l) .....		N
	Flash point (°C) .....		N
4.3.13	Radiation	No radiation.	P
4.3.13.1	General		N
4.3.13.2	Ionizing radiation		N
	Measured radiation (pA/kg) .....		N
	Measured high-voltage (kV) .....		N
	Measured focus voltage (kV) .....		N
	CRT markings .....		N
4.3.13.3	Effect of ultraviolet (UV) radiation on materials		N
	Part, property, retention after test, flammability classification .....		N
4.3.13.4	Human exposure to ultraviolet (UV) radiation .....		N
4.3.13.5	Laser (including laser diodes)and LEDs		N

EN 60950-1			
Clause	Requirement - Test	Result-Remark	Verdict

4.3.13.5.1	Lasers (including laser diodes)		
4.3.13.5.2	Light emitting diodes (LED)		
4.3.13.6	Other types .....	Not used.	N

4.4	Protection against hazardous moving parts		N
4.4.1	General	No moving parts.	N
4.4.2	Protection in operator access areas .....		N
	Household and home/office document/media shredders	(see Annex EE)	N
4.4.3	Protection in restricted access locations .....		N
4.4.4	Protection in service access areas		N

4.5	Thermal requirements		P
4.5.1	General	(see appended table 4.5.1)	P
4.5.2	Temperature tests		P
4.5.3	Temperature limits for materials		P
4.5.4	Touch temperature limits		P
4.5.5	Resistance to abnormal heat .....		N

4.6	Openings in enclosures		N
4.6.1	Top and side openings		N
4.6.2	Bottoms of fire enclosures		N
4.6.3	Doors or covers in fire enclosures		N
4.6.4	Openings in transportable equipment		N
4.6.4.1	Constructional design measures		N
4.6.4.2	Evaluation measures for larger openings		N
4.6.4.3	Use of metallized parts		N
4.6.5	Adhesives for constructional purposes	Not used	N

4.7	Resistance to fire		P
-----	--------------------	--	---

EN 60950-1			
Clause	Requirement - Test	Result-Remark	Verdict

4.7.1	Reducing the risk of ignition and spread of flame		P
4.7.2	Conditions for a fire enclosure		P
4.7.2.1	Parts requiring a fire enclosure		N
4.7.2.2	Parts not requiring a fire enclosure	Device is powered by a limited power source (AC/DC charger) . Components are mounted on materials of flammability Class V-1 min	P
4.7.3	Materials		P
4.7.3.1	General	(see appended table 1.5.1)	P
4.7.3.2	Materials for fire enclosures		N
4.7.3.3	Materials for components and other parts outside fire enclosures	The flammability Class of enclosure is V-1, see table 1.5.1	P
4.7.3.4	Materials for components and other parts inside fire enclosures	The flammability Class of PCB is V-1 min, see table 1.5.1	P
4.7.3.5	Materials for air filter assemblies	No air filters provided.	N
4.7.3.6	Materials used in high-voltage components	No high-voltage components provided.	N

5	ELECTRICAL REQUIREMENTS AND SIMULATED ABNORMAL CONDITIONS		P
5.1	Touch current and protective conductor current		N
5.1.1	General	Class III equipment	N
5.1.2	Configuration of equipment under test (EUT)		N
5.1.2.1	Single connection to an a.c. mains supply		N
5.1.2.2	Redundant multiple connections to an a.c. mains supply		N
5.1.2.3	Simultaneous multiple connections to an a.c. mains supply		N
5.1.3	Test circuit		N
5.1.4	Application of measuring instrument		N
5.1.5	Test procedure		N

EN 60950-1			
Clause	Requirement - Test	Result-Remark	Verdict

5.1.6	Test measurements		N
	Supply voltage (V) .....		N
	Measured touch current (mA) .....		N
	Max. allowed touch current (mA) .....		N
	Measured protective conductor current (mA) .....		N
	Max. allowed protective conductor current (mA) .....		N
5.1.7	Equipment with touch current exceeding 3,5 mA		N
5.1.7.1	General .....		N
5.1.7.2	Simultaneous multiple connections to the supply		N
5.1.8	Touch currents to telecommunication networks and cable distribution systems and from telecommunication networks	No TNV circuit.	N
5.1.8.1	Limitation of the touch current to a telecommunication network or to a cable distribution system		N
5.1.8.2	Summation of touch currents from telecommunication networks		N
	a) EUT with earthed telecommunication ports .....		N
	b) EUT whose telecommunication ports have no reference to protective earth		N

5.2	Electric strength		N
5.2.1	General		N
5.2.2	Test procedure		N

5.3	Abnormal operating and fault conditions		P
5.3.1	Protection against overload and abnormal operation		P
5.3.2	Motors		N
5.3.3	Transformers	No such component	N
5.3.4	Functional insulation .....		P

EN 60950-1			
Clause	Requirement - Test	Result-Remark	Verdict

5.3.5	Electromechanical components	No electromechanical components	N
5.3.6	Audio amplifiers in ITE .....	No Audio amplifiers	N
5.3.7	Simulation of faults	See table 5.3	P
5.3.8	Unattended equipment	Not for unattended use.	N
5.3.9	Compliance criteria for abnormal operating and fault conditions		P
5.3.9.1	During the tests		P
5.3.9.2	After the tests		P

6	CONNECTION TO TELECOMMUNICATION NETWORKS		N
6.1	Protection of telecommunication network service persons, and users of other equipment connected to the network, from hazards in the equipment		N
6.1.1	Protection from hazardous voltages		N
6.1.2	Separation of the telecommunication network from earth		N
6.1.2.1	Requirements	No TNV -circuit	N
6.1.2.2	Exclusions .....		N

6.2	Protection of equipment users from overvoltages on telecommunication networks		N
6.2.1	Separation requirements		N
6.2.2	Electric strength test procedure		N
6.2.2.1	Impulse test		N
6.2.2.2	Steady-state test		N
6.2.2.3	Compliance criteria		N

6.3	Protection of the telecommunication wiring system from overheating		N
	Max. output current (A) .....	No telecommunication wiring systems	N
	Current limiting method .....		N

7	CONNECTION TO CABLE DISTRIBUTION SYSTEMS		N
---	--	--	---

EN 60950-1			
Clause	Requirement - Test	Result-Remark	Verdict
7.1	General	No cable distribution systems	N
7.2	Protection of cable distribution system service persons, and users of other equipment connected to the system, from hazardous voltages in the equipment		N
7.3	Protection of equipment users from overvoltages on the cable distribution system		N
7.4	Insulation between primary circuits and cable distribution systems		N
7.4.1	General		N
7.4.2	Voltage surge test		N
7.4.3	Impulse test		N



EN 60950-1			
Clause	Requirement - Test	Result-Remark	Verdict
A	ANNEX A, TESTS FOR RESISTANCE TO HEAT AND FIRE		N
A.1	Flammability test for fire enclosures of movable equipment having a total mass exceeding 18 kg, and of stationary equipment (see 4.7.3.2)		N
A.1.1	Samples.....		N
	Wall thickness (mm) .....		N
A.1.2	Conditioning of samples; temperature (°C) ...		N
A.1.3	Mounting of samples .....		N
A.1.4	Test flame (see IEC 60695-11-3)		N
	Flame A, B, C or D .....		N
A.1.5	Test procedure		N
A.1.6	Compliance criteria		N
	Sample 1 burning time (s) .....		N
	Sample 2 burning time (s) .....		N
	Sample 3 burning time (s) .....		N
A.2	Flammability test for fire enclosures of movable equipment having a total mass not exceeding 18 kg, and for material and components located inside fire enclosures (see 4.7.3.2 and 4.7.3.4)		N
A.2.1	Samples, material.....		N
	Wall thickness (mm) .....		N
A.2.2	Conditioning of samples; temperature (°C) ...		N
A.2.3	Mounting of samples .....		N
A.2.4	Test flame (see IEC 60695-11-4)		N
	Flame A, B or C .....		N
A.2.5	Test procedure		N
A.2.6	Compliance criteria		N
	Sample 1 burning time (s) .....		N
	Sample 2 burning time (s) .....		N
	Sample 3 burning time (s) .....		N

EN 60950-1			
Clause	Requirement - Test	Result-Remark	Verdict
A.2.7	Alternative test acc. to IEC 60695-11-5, cl. 5 and 9		N
	Sample 1 burning time (s) .....		N
	Sample 2 burning time (s) .....		N
	Sample 3 burning time (s) .....		N
A.3	Hot flaming oil test (see 4.6.2)		N
A.3.1	Mounting of samples		N
A.3.2	Test procedure		N
A.3.3	Compliance criterion		N

B	ANNEX B, MOTOR TESTS UNDER ABNORMAL CONDITIONS (see 4.7.2.2 and 5.3.2)		N
B.1	General requirements		N
B.2	Test conditions		N
B.3	Maximum temperatures		N
B.4	Running overload test		N
B.5	Locked-rotor overload test		N
B.6	Running overload test for d.c. motors in secondary circuits		N
B.6.1	General		N
B.6.2	Test procedure		N
B.6.3	Alternative test procedure		N
B.6.4	Electric strength test; test voltage (V) .....		N
B.7	Locked-rotor overload test for d.c. motors in secondary circuits		N
B.7.1	General		N
B.7.2	Test procedure		N
B.7.3	Alternative test procedure		N
B.7.4	Electric strength test; test voltage (V) .....		N
B.8	Test for motors with capacitors		N

EN 60950-1			
Clause	Requirement - Test	Result-Remark	Verdict
B.9	Test for three-phase motors		N
B.10	Test for series motors		N
C	ANNEX C, TRANSFORMERS (see 1.5.4 and 5.3.3)		N
C.1	Overload test		N
C.2	Insulation		N
	Protection from displacement of windings.....		N
D	ANNEX D, MEASURING INSTRUMENTS FOR TOUCH-CURRENT TESTS (see 5.1.4)		N
D.1	Measuring instrument		N
D.2	Alternative measuring instrument		N
E	ANNEX E, TEMPERATURE RISE OF A WINDING (see 1.4.13)		N
F	ANNEX F, MEASUREMENT OF CLEARANCES AND CREEPAGE DISTANCES (see 2.10 and Annex G)		N
G	ANNEX G, ALTERNATIVE METHOD FOR DETERMINING MINIMUM CLEARANCES		N
G.1	Clearances		N
G.1.1	General		N
G.1.2	Summary of the procedure for determining minimum clearances		N
G.2	Determination of mains transient voltage (V)		N
G.2.1	AC mains supply .....		N
G.2.2	Earthed d.c. mains supplies .....		N
G.2.3	Unearthed d.c. mains supplies .....		N
G.2.4	Battery operation .....		N
G.3	Determination of telecommunication network transient voltage (V) .....		N

EN 60950-1			
Clause	Requirement - Test	Result-Remark	Verdict
G.4	Determination of required withstand voltage (V)		N
G.4.1	Mains transients and internal repetitive peaks .....		N
G.4.2	Transients from telecommunication networks .....		N
G.4.3	Combination of transients		N
G.4.4	Transients from cable distribution systems		N
G.5	Measurement of transient voltages (V)		N
	a) Transients from a mains supply		N
	For an a.c. mains supply		N
	For a d.c. mains supply		N
	b) Transients from a telecommunication network		N
G.6	Determination of minimum clearances .....		N
H	ANNEX H, IONIZING RADIATION (see 4.3.13)		N
J	ANNEX J, TABLE OF ELECTROCHEMICAL POTENTIALS (see 2.6.5.6)		N
K	ANNEX K, THERMAL CONTROLS (see 1.5.3 and 5.3.8)		N
K.1	Making and breaking capacity		N
K.2	Thermostat reliability; operating voltage (V) ..		N
K.3	Thermostat endurance test; operating voltage (V) .....		N
K.4	Temperature limiter endurance; operating voltage (V) .....		N
K.5	Thermal cut-out reliability		N
K.6	Stability of operation	(see appended table 5.3)	N
L	ANNEX L, NORMAL LOAD CONDITIONS FOR SOME TYPES OF ELECTRICAL BUSINESS EQUIPMENT (see 1.2.2.1 and 4.5.2)		N

EN 60950-1			
Clause	Requirement - Test	Result-Remark	Verdict

L.1	Typewriters		N
L.2	Adding machines and cash registers		N
L.3	Erasers		N
L.4	Pencil sharpeners		N
L.5	Duplicators and copy machines		N
L.6	Motor-operated files		N
L.7	Other business equipment		N

M	ANNEX M, CRITERIA FOR TELEPHONE RINGING SIGNALS (see 2.3.1)		N
M.1	Introduction		N
M.2	Method A		N
M.3	Method B		N
M.3.1	Ringing signal		N
M.3.1.1	Frequency (Hz) .....		N
M.3.1.2	Voltage (V) .....		N
M.3.1.3	Cadence; time (s), voltage (V) .....		N
M.3.1.4	Single fault current (mA) .....		N
M.3.2	Tripping device and monitoring voltage .....		N
M.3.2.1	Conditions for use of a tripping device or a monitoring voltage		N
M.3.2.2	Tripping device		N
M.3.2.3	Monitoring voltage (V) .....		N

N	ANNEX N, IMPULSE TEST GENERATORS (see 1.5.7.2, 1.5.7.3, 2.10.3.9, 6.2.2.1, 7.3.2, 7.4.3 and Clause G.5)		N
N.1	ITU-T impulse test generators		N
N.2	IEC 60065 impulse test generator		N

P	ANNEX P, NORMATIVE REFERENCES		N
---	-------------------------------	--	---

EN 60950-1			
Clause	Requirement - Test	Result-Remark	Verdict
Q	ANNEX Q, Voltage dependent resistors (VDRs) (see 1.5.9.1)		N
	a) Preferred climatic categories .....		N
	b) Maximum continuous voltage .....		N
	c) Pulse current .....		N
R	ANNEX R, EXAMPLES OF REQUIREMENTS FOR QUALITY CONTROL PROGRAMMES		N
R.1	Minimum separation distances for unpopulated coated printed boards (see 2.10.6.2)		N
R.2	Reduced clearances (see 2.10.3)		N
S	ANNEX S, PROCEDURE FOR IMPULSE TESTING (see 6.2.2.3)		N
S.1	Test equipment		N
S.2	Test procedure		N
S.3	Examples of waveforms during impulse testing		N
T	ANNEX T, GUIDANCE ON PROTECTION AGAINST INGRESS OF WATER (see 1.1.2)		N
U	ANNEX U, INSULATED WINDING WIRES FOR USE WITHOUT INTERLEAVED INSULATION (see 2.10.5.4)		N
V	ANNEX V, AC POWER DISTRIBUTION SYSTEMS (see 1.6.1)		N
V.1	Introduction		N
V.2	TN power distribution systems		N
W	ANNEX W, SUMMATION OF TOUCH CURRENTS		N
W.1	Touch current from electronic circuits		N
W.1.1	Floating circuits		N

EN 60950-1			
Clause	Requirement - Test	Result-Remark	Verdict
W.1.2	Earthed circuits		N
W.2	Interconnection of several equipments		N
W.2.1	Isolation		N
W.2.2	Common return, isolated from earth		N
W.2.3	Common return, connected to protective earth		N
X	ANNEX X, MAXIMUM HEATING EFFECT IN TRANSFORMER TESTS (see clause C.1)		N
X.1	Determination of maximum input current		N
X.2	Overload test procedure		N
Y	ANNEX Y, ULTRAVIOLET LIGHT CONDITIONING TEST (see 4.3.13.3)		N
Y.1	Test apparatus .....	No ultraviolet lights	N
Y.2	Mounting of test samples .....		N
Y.3	Carbon-arc light-exposure apparatus .....		N
Y.4	Xenon-arc light exposure apparatus .....		N
Z	ANNEX Z, OVERVOLTAGE CATEGORIES (see 2.10.3.2 and Clause G.2)		N
AA	ANNEX AA, MANDREL TEST (see 2.10.5.8)		N
BB	ANNEX BB, CHANGES IN THE SECOND EDITION		N
CC	ANNEX CC, Evaluation of integrated circuit (IC) current limiters		N
CC.1	General		N
CC.2	Test program 1		N
CC.3	Test program 2		N
DD	ANNEX DD, Requirements for the mounting means of rack-mounted equipment		N

EN 60950-1			
Clause	Requirement - Test	Result-Remark	Verdict
DD.1	General		N
DD.2	Mechanical strength test, variable N		N
DD.3	Mechanical strength test, 250N, including end stops		N
DD.4	Compliance		N

EE	ANNEX EE, Household and home/office document/media shredders		N
EE.1	General		N
EE.2	Markings and instructions		N
	Use of markings or symbols		N
	Information of user instructions, maintenance and/or servicing instructions		N
EE.3	Inadvertent reactivation test		N
EE.4	Disconnection of power to hazardous moving parts:		N
	Use of markings or symbols		N
EE.5	Protection against hazardous moving parts		N
	Test with test finger (Figure 2A)		N
	Test with wedge probe (Figure EE1 and EE2)		N



EN 60950-1			
Clause	Requirement - Test	Result-Remark	Verdict


EN 60950-1:2006/A11 :2009/A1 :2010/A12 :2011 – CENELEC COMMON MODIFICATIONS			
Contents	Add the following annexes: Annex ZA (normative) Normative references to international publications with their corresponding European publications Annex ZB (normative) Special national conditions		N
General	Delete all the “country” notes in the reference document according to the following list: 1.4.8 Note 2                      1.5.1 Note 2 & 3                      1.5.7.1 Note 1.5.8 Note 2                      1.5.9.4 Note                      1.7.2.1 Note 4, 5 & 6 2.2.3 Note                      2.2.4 Note                      2.3.2 Note 2.3.2.1 Note 2                      2.3.4 Note 2                      2.6.3.3 Note 2 & 3 2.7.1 Note                      2.10.3.2 Note 2                      2.10.5.13 Note 3 3.2.1.1 Note                      3.2.4 Note 3.                      2.5.1 Note 2 4.3.6 Note 1 & 2                      4.7 Note 4                      4.7.2.2 Note 4.7.3.1 Note 2                      5.1.7.1 Note 3 & 4                      5.3.7 Note 1 6 Note 2 & 5                      6.1.2.1 Note 2                      6.1.2.2 Note 6.2.2 Note 6.                      2.2.1 Note 2                      6.2.2.2 Note 7.1 Note 3                      7.2 Note                      7.3 Note 1 & 2 G.2.1 Note 2                      Annex H Note 2		N
General (A1:2010)	Delete all the “country” notes in the reference document according to the following list: 1.5.7.1 Note                      6.1.2.1 Note 2 6.2.2.1 Note 2                      EE.3 Note		N

EN 60950-1			
Clause	Requirement - Test	Result-Remark	Verdict
1.3.Z1	<p>Add the following subclause:</p> <p>1.3.Z1 Exposure to excessive sound pressure</p> <p>The apparatus shall be so designed and constructed as to present no danger when used for its intended purpose, either in normal operating conditions or under fault conditions, particularly providing protection against exposure to excessive sound pressures from headphones or earphones.</p> <p>NOTE Z1 A new method of measurement is described in EN 50332-1, Sound system equipment: Headphones and earphones associated with portable audio equipment - Maximum sound pressure level measurement methodology and limit considerations - Part 1: General method for “one package equipment”, and in EN 50332-2, Sound system equipment: Headphones and earphones associated with portable audio equipment - Maximum sound pressure level measurement methodology and limit considerations - Part 2: Guidelines to associate sets with headphones coming from different manufacturers.</p>		N
(A12:20 11)	<p>In EN 60950-1:2006/A12:2011</p> <p>Delete the addition of 1.3.Z1 / EN 60950-1:2006</p> <p>Delete the definition 1.2.3.Z1/ EN 60950-1:2006 /A1:2010</p>		N
1.5.1	<p>Add the following NOTE: NOTE Z1 The use of certain substances in electrical and electronic equipment is restricted within the EU: see Directive 2002/95/EC</p>		N
1.7.2.1 (A1:20 10)	<p>In addition, for a PORTABLE SOUND SYSTEM, the instructions shall include a warning that excessive sound pressure from earphones and headphones can cause hearing loss.</p>		N
1.7.2.1 (A12.20 11)	<p>In EN 60950-1:2006/A12:2011</p> <p>Delete NOTE Z1 and the addition for Portable Sound System. Add the following clause and annex to the existing standard and amendments.</p>		N
	<p><b>Zx Protection against excessive sound pressure from personal music players</b></p>		N

EN 60950-1			
Clause	Requirement - Test	Result-Remark	Verdict
	<p><b>Zx.1 General</b></p> <p>This sub-clause specifies requirements for protection against excessive sound pressure from personal music players that are closely coupled to the ear. It also specifies requirements for earphones and headphones intended for use with personal music players.</p> <p>A personal music player is a portable equipment <input type="checkbox"/> for personal use, that:</p> <ul style="list-style-type: none"> <li>-is designed to allow the user to listen to recorded or broadcast sound or video; and</li> <li>-primarily uses headphones or earphones that can be worn in or on or around the ears; and</li> <li>-allows the user to walk around while in use.</li> </ul> <p>NOTE 1 Examples are hand-held or body-worn portable CD players, MP3 audio players, mobile phones with MP3 type features, PDA's or similar equipment.</p> <p>A personal music player and earphones or headphones intended to be used with personal music players shall comply with the requirements of this sub-clause.</p> <p>The requirements in this sub-clause are valid for music or video mode only.</p> <p>The requirements do not apply:</p> <ul style="list-style-type: none"> <li>-while the personal music player is connected to an external amplifier; or</li> <li>-<input type="checkbox"/> while the headphones or earphones are not used.</li> </ul> <p>NOTE 2 An external amplifier is an amplifier which is not part of the personal music player or the listening device, but which is intended to play the music as a standalone music player.</p> <p>The requirements do not apply to:</p> <ul style="list-style-type: none"> <li><input type="checkbox"/> <input type="checkbox"/> hearing aid equipment and professional equipment;</li> </ul> <p>NOTE 3 Professional equipment is equipment sold through special sales channels. All products sold through normal electronics stores are considered not to be professional equipment.</p>		N

EN 60950-1			
Clause	Requirement - Test	Result-Remark	Verdict
	<p>-analogue personal music players (personal music players without any kind of digital processing of the sound signal) that are brought to the market before the end of 2015.</p> <p>NOTE 4 This exemption has been allowed because this technology is falling out of use and it is expected that within a few years it will no longer exist. This exemption will not be extended to other technologies.</p> <p>For equipment which is clearly designed or intended for use by young children, the limits of EN 71-1 apply.</p>		
	<p><b>Zx.2 Equipment requirements</b></p> <p>No safety provision is required for equipment that complies with the following:</p> <ul style="list-style-type: none"> <li>- equipment provided as a package (personal music player with its listening device), where the acoustic output LAeq,T is ≤ 85 dBA measured while playing the fixed “programme simulation noise” as described in EN 50332-1; and</li> <li>- a personal music player provided with an analogue electrical output socket for a listening device, where the electrical output is ≤ 27 mV measured as described in EN 50332-2, while playing the fixed “programme simulation noise” as described in EN 50332-1.</li> </ul> <p>NOTE 1 Wherever the term acoustic output is used in this clause, the 30 s A-weighted equivalent sound pressure level LAeq,T is meant. See also Zx.5 and Annex Zx.</p> <p>All other equipment shall:</p> <ul style="list-style-type: none"> <li>a) protect the user from unintentional acoustic outputs exceeding those mentioned above; and</li> <li>b) have a standard acoustic output level not exceeding those mentioned above, and automatically return to an output level not exceeding those mentioned above when the power is switched off; and</li> <li>c) provide a means to actively inform the user of the increased sound pressure when the equipment is operated with an acoustic output exceeding those</li> </ul>		N

EN 60950-1			
Clause	Requirement - Test	Result-Remark	Verdict
	<p>mentioned above. Any means used shall be acknowledged by the user before activating a mode of operation which allows for an acoustic output exceeding those mentioned above. The acknowledgement does not need to be repeated more than once every 20 h of cumulative listening time; and NOTE 2 Examples of means include visual or audible signals. Action from the user is always required.</p> <p>NOTE 3 The 20 h listening time is the accumulative listening time, independent how often and how long the personal music player has been switched off.</p> <p>d) have a warning as specified in Zx.3; and</p> <p>e) not exceed the following:</p> <ol style="list-style-type: none"> <li>1) equipment provided as a package (player with Its listening device), the acoustic output shall be <math>\leq 100</math> dBA measured while playing the fixed "programme simulation noise" described in EN 50332-1; and</li> <li>2) a personal music player provided with an analogue electrical output socket for a listening device, the electrical output shall be <math>\leq 150</math> mV measured as described in EN 50332-2, while playing the fixed "programme simulation noise" described in EN 50332-1.</li> </ol> <p>For music where the average sound pressure (long term LAeq,T) measured over the duration of the song is lower than the average produced by the programme simulation noise, the warning does not need to be given as long as the average soundpressure of the song is below the basic limit of 85 dBA. In this case T becomes the duration of the song.</p> <p>NOTE 4 Classical music typically has an average sound pressure (long term LAeq,T) which is much lower than the average programme simulation noise. Therefore, if the player is capable to analyse the song and compare it with the programme simulation noise, the warning does not need to be given as long as the average sound pressure of the song is below the basic limit of 85 dBA.</p> <p>For example, if the player is set with the programme simulation noise to 85 dBA, but the average music level of the song is only 65 dBA, there is no need to give a warning or ask an acknowledgement as long as the average sound level of the song is not above the basic</p>		

EN 60950-1			
Clause	Requirement - Test	Result-Remark	Verdict
	<p><b>Zx.3 Warning</b>                      The warning shall be placed on the equipment, or on the packaging, or in the instruction manual and shall consist of the following:                      -the symbol of Figure 1 with a minimum height of 5 mm; and                      -the following wording, or similar:                      “To prevent possible hearing damage, do not listen at high volume levels for long periods.”</p>  <p><b>Figure 1 – Warning label (IEC 60417-6044)</b></p> <p>Alternatively, the entire warning may be given through the equipment display during use, when the user is asked to acknowledge activation of the higher level.</p>	the warning in the user instruction manual	N
	<p><b>Zx.4 Requirements for listening devices (headphones and earphones)</b></p>		N
	<p><b>Zx.4.1 Wired listening devices with analogue input</b>                      With 94 dBA sound pressure output LAeq,T, the input voltage of the fixed “programme simulation noise” described in EN 50332-2 shall be ≥ 75 mV.                      This requirement is applicable in any mode where the headphones can operate (active or passive), including any available setting (for example built-in volume level control).                      NOTE The values of 94 dBA – 75 mV correspond with 85dBA – 27 mV and 100 dBA – 150 mV.</p>		N

EN 60950-1			
Clause	Requirement - Test	Result-Remark	Verdict
	<p><b>Zx.4.2 Wired listening devices with digital input</b>                      With any playing device playing the fixed “programme simulation noise” described in EN 50332-1 (and respecting the digital interface standards, where a digital interface standard exists that specifies the equivalent acoustic level), the acoustic output LAeq,T of the listening device shall be ≤ 100 dBA.</p> <p>This requirement is applicable in any mode where the headphones can operate, including any available setting (for example built-in volume level control, additional sound feature like equalization, etc.).</p> <p>NOTE An example of a wired listening device with digital input is a USB headphone.</p>		N
	<p><b>Zx.4.3 Wireless listening devices</b>                      In wireless mode:                      - with any playing and transmitting device playing the fixed programme simulation noise described in EN 50332-1; and                      - respecting the wireless transmission standards, where an air interface standard exists that specifies the equivalent acoustic level; and                      -with volume and sound settings in the listening device (for example built-in volume level control, additional sound feature like equalization, etc.) set to the combination of positions that maximize the measured acoustic output for the above mentioned programme simulation noise, the acoustic output LAeq,T of the listening device shall be ≤ 100 dBA.</p> <p>NOTE An example of a wireless listening device is a Bluetooth headphone.</p>	No wireless listening devise	N
	<p><b>Zx.5 Measurement methods</b>                      Measurements shall be made in accordance with EN 50332-1 or EN 50332-2 as applicable. Unless stated otherwise, the time interval T shall be 30s.</p> <p>NOTE Test method for wireless equipment provided without listening device should be defined.</p>		N

EN 60950-1			
Clause	Requirement - Test	Result-Remark	Verdict
2.7.1	<p>Replace the subclause as follows:</p> <p>Basic requirements</p> <p>To protect against excessive current, short-circuits and earth faults in PRIMARY CIRCUITS, protective devices shall be included either as integral parts of the equipment or as parts of the building installation, subject to the following, a), b) and c):</p> <p>a) except as detailed in b) and c), protective devices necessary to comply with the requirements of 5.3 shall be included as parts of the equipment;</p> <p>b) for components in series with the mains input to the equipment such as the supply cord, appliance coupler, r.f.i. filter and switch, short-circuit and earth fault protection may be provided by protective devices in the building installation;</p> <p>c) it is permitted for PLUGGABLE EQUIPMENT TYPE B or PERMANENTLY CONNECTED EQUIPMENT, to rely on dedicated overcurrent and short-circuit protection in the building installation, provided that the means of protection, e.g. fuses or circuit breakers, is fully specified in the installation instructions.</p> <p>If reliance is placed on protection in the building installation, the installation instructions shall so state, except that for PLUGGABLE EQUIPMENT TYPE A the building installation shall be regarded as providing protection in accordance with the rating of the wall socket outlet.</p>		N
2.7.2	This subclause has been declared 'void'.		N
3.2.3	Delete the NOTE in Table 3A, and delete also in this table the conduit sizes in parentheses.		N



EN 60950-1			
Clause	Requirement - Test	Result-Remark	Verdict
3.2.5.1	<p>Replace “60245 IEC 53” by “H05 RR-F”;                      “60227 IEC 52” by “H03 VV-F or                      H03 VVH2-F”;                      “60227 IEC 53” by “H05 VV-F or                      H05 VVH2-F2”.</p> <p>In Table 3B, replace the first four lines by the following:                      Up to and including 6  0,75<sup>a)</sup>                        Over 6 up to and including 10 (0,75)<sup>b)</sup> 1,0                        Over 10 up to and including 16 (1,0)<sup>c)</sup> 1,5  </p> <p>In the conditions applicable to Table 3B delete the words “in some countries” in condition<sup>a)</sup>.</p> <p>In NOTE 1, applicable to Table 3B, delete the second sentence.</p>		N
3.3.4	<p>In Table 3D, delete the fourth line: conductor sizes for 10 to 13 A, and replace with the following:                      Over 10 up to and including 16  1,5 to 2,5  1,5 to 4 </p> <p>Delete the fifth line: conductor sizes for 13 to 16 A.</p>		N
4.3.13.6 ( A1:20 10)	<p>Replace the existing NOTE by the following:</p> <p>NOTE Z1 Attention is drawn to:                      1999/519/EC: Council Recommendation on the limitation of exposure of the general public to electromagnetic fields 0 Hz to 300 GHz, and                      2006/25/EC:Directive on the minimum health and safety requirements regarding the exposure of workers to risks arising from physical agents (artificial optical radiation).</p> <p>Standards taking into account mentioned Recommendation and Directive which demonstrate compliance with the applicable EU Directive are indicated in the OJEC.</p>		N
Annex H	<p>Replace the last paragraph of this annex by:</p> <p>At any point 10 cm from the surface of the OPERATOR ACCESS AREA, the dose rate shall not exceed 1 μSv/h (0,1 mR/h) (see NOTE). Account is taken of the background level.</p> <p>Replace the notes as follows: NOTE These values appear in Directive 96/29/Euratom.Delete NOTE 2.</p>		N

EN 60950-1			
Clause	Requirement - Test	Result-Remark	Verdict
Biblio-graphy	Additional EN standards.		—
ZA	NORMATIVE REFERENCES TO INTERNATIONAL PUBLICATIONS WITH THEIR CORRESPONDING EUROPEAN PUBLICATIONS		—

ZB	SPECIAL NATIONAL CONDITIONS		N
1.2.4.1	In Denmark, certain types of Class I appliances (see 3.2.1.1) may be provided with a plug not establishing earthing conditions when inserted into Danish socket-outlets.		N
1.2.13.14	In <b>Norway</b> and <b>Sweden</b> , for requirements see 1.7.2.1 and 7.3 of this annex.		N
1.5.7.1	In Finland, Norway and Sweden, resistors bridging BASIC INSULATION in CLASS I PLUGGABLE EQUIPMENT TYPE A must comply with the requirements in 1.5.7.2.		N
1.5.8	In Norway, due to the IT power system used (see annex V, Figure V.7), capacitors are required to be rated for the applicable line-to-line voltage (230 V).		N
1.5.9.4	In Finland, Norway and Sweden, the third dashed sentence is applicable only to equipment as defined in 6.1.2.2 of this annex.		N

EN 60950-1			
Clause	Requirement - Test	Result-Remark	Verdict
1.7.2.1	<p>In Finland, Norway and Sweden, CLASS I PLUGGABLE EQUIPMENT TYPE A intended for connection to other equipment or a network shall, if safety relies on connection to protective earth or if surge suppressors are connected between the network terminals and accessible parts, have a marking stating that the equipment must be connected to an earthed mains socket-outlet.</p> <p>The marking text in the applicable countries shall be as follows:</p> <p>In Finland: "Laite on liitettävä suojavaadoituskoskettimilla varustettuun pistorasiaan"</p> <p>In Norway: "Apparatet må tilkoples jordet stikkontakt"</p> <p>In Sweden: "Apparaten skall anslutas till jordat uttag"</p> <p>In <b>Norway</b> and <b>Sweden</b>, the screen of the cable distribution system is normally not earthed at the entrance of the building and there is normally no equipotential bonding system within the building. Therefore the protective earthing of the building installation need to be isolated from the screen of a cable distribution system.</p> <p>It is however accepted to provide the insulation external to the equipment by an adapter or an interconnection cable with galvanic isolator, which may be provided by e.g. a retailer.</p> <p>The user manual shall then have the following or similar information in Norwegian and Swedish language respectively, depending on in what country the equipment is intended to be used in:</p> <p>"Equipment connected to the protective earthing of the building installation through the mains connection or through other equipment with a connection to protective earthing – and to a cable distribution system using coaxial cable, may in some circumstances create a fire hazard. Connection to a cable distribution system has therefore to be provided through a device providing electrical isolation below a certain frequency range (galvanic isolator, see EN 60728-11)."</p>		N

EN 60950-1			
Clause	Requirement - Test	Result-Remark	Verdict
	<p>NOTE In Norway, due to regulation for installations of cable distribution systems, and in Sweden, a galvanic isolator shall provide electrical insulation below 5 MHz. The insulation shall withstand a dielectric strength of 1,5 kV r.m.s., 50 Hz or 60 Hz, for 1 min.</p> <p>Translation to Norwegian (the Swedish text will also be accepted in Norway):</p> <p>“Utstyr som er koplet til beskyttelsesjord via nettplugg og/eller via annet jordtilkoplet utstyr – og er tilkoplet et kabel-TV nett, kan forårsake brannfare. For å unngå dette skal det ved tilkopling av utstyret til kabel-TV nettet installeres en galvanisk isolator mellom utstyret og kabel- TV nettet.”</p> <p>Translation to Swedish:</p> <p>”Utrustning som är kopplad till skyddsjord via jordat vägguttag och/eller via annan utrustning och samtidigt är kopplad till kabel-TV nät kan i vissa fall medföra risk för brand. För att undvika detta skall vid anslutning av utrustningen till kabel-TV nät galvanisk isolator finnas mellan utrustningen och kabel-TV nätet.”</p>		
1.7.5	In Denmark, socket-outlets for providing power to other equipment shall be in accordance with the Heavy Current Regulations, Section 107-2-D1, Standard Sheet DK 1-3a, DK 1-5a or DK 1-7a, when used on Class I equipment. For STATIONARY EQUIPMENT the socket-outlet shall be in accordance with Standard Sheet DK 1-1b or DK 1-5a.		N
2.2.4	In Norway, for requirements see 1.7.2.1, 6.1.2.1 and 6.1.2.2 of this annex.		N
2.3.2	In Finland, Norway and Sweden there are additional requirements for the insulation. See 6.1.2.1 and 6.1.2.2 of this annex.		N
2.3.4	In Norway, for requirements see 1.7.2.1, 6.1.2.1 and 6.1.2.2 of this annex.		N
2.6.3.3	In the United Kingdom, the current rating of the circuit shall be taken as 13 A, not 16 A.		N

EN 60950-1			
Clause	Requirement - Test	Result-Remark	Verdict
2.7.1	In the United Kingdom, to protect against excessive currents and short-circuits in the PRIMARY CIRCUIT of DIRECT PLUG-IN EQUIPMENT, tests according to 5.3 shall be conducted, using an external protective device rated 30 A or 32 A. If these tests fail, suitable protective devices shall be included as integral parts of the DIRECT PLUG-IN EQUIPMENT, so that the requirements of 5.3 are met.		N
2.10.5.1 3	In Finland, Norway and Sweden, there are additional requirements for the insulation, see 6.1.2.1 and 6.1.2.2 of this annex.		N
3.2.1.1	<p>In Switzerland, supply cords of equipment having a RATED CURRENT not exceeding 10 A shall be provided with a plug complying with SEV 1011 or IEC 61034-1 and one of the following dimension sheets:</p> <p>SEV 6532-2.1991 Plug Type 15      3P+N+PE 250/400 V, 10 A</p> <p>SEV 6533-2.1991 Plug Type 11      L+N 250 V, 10 A</p> <p>SEV 6534-2.1991 Plug Type 12      L+N+PE 250 V, 10 A</p> <p>In general, EN 60309 applies for plugs for currents exceeding 10 A. However, a 16 A plug and socket-outlet system is being introduced in Switzerland, the plugs of which are according to the following dimension sheets, published in February 1998:</p> <p>SEV 5932-2.1998 Plug Type 25      3L+N+PE 230/400 V, 16 A</p> <p>SEV 5933-2.1998 Plug Type 21      L+N 250 V, 16 A</p> <p>SEV 5934-2.1998 Plug Type 23      L+N+PE 250 V, 16 A</p>		N

EN 60950-1			
Clause	Requirement - Test	Result-Remark	Verdict
3.2.1.1	<p>In Denmark, supply cords of single-phase equipment having a rated current not exceeding 13 A shall be provided with a plug according to the Heavy Current Regulations, Section 107-2-D1.</p> <p>CLASS I EQUIPMENT provided with socket-outlets with earth contacts or which are intended to be used in locations where protection against indirect contact is required according to the wiring rules shall be provided with a plug in accordance with standard sheet DK 2-1a or DK 2-5a.</p> <p>If poly-phase equipment and single-phase equipment having a RATED CURRENT exceeding 13 A is provided with a supply cord with a plug, this plug shall be in accordance with the Heavy Current Regulations, Section 107-2-D1 or EN 60309-2.</p>		N
3.2.1.1	<p>In Spain, supply cords of single-phase equipment having a rated current not exceeding 10 A shall be provided with a plug according to UNE 20315:1994.</p> <p>Supply cords of single-phase equipment having a rated current not exceeding 2,5 A shall be provided with a plug according to UNE-EN 50075:1993.</p> <p>CLASS I EQUIPMENT provided with socket-outlets with earth contacts or which are intended to be used in locations where protection against indirect contact is required according to the wiring rules, shall be provided with a plug in accordance with standard UNE 20315:1994.</p> <p>If poly-phase equipment is provided with a supply cord with a plug, this plug shall be in accordance with UNE-EN 60309-2.</p>		N

EN 60950-1			
Clause	Requirement - Test	Result-Remark	Verdict
3.2.1.1	In the United Kingdom, apparatus which is fitted with a flexible cable or cord and is designed to be connected to a mains socket conforming to BS 1363 by means of that flexible cable or cord and plug, shall be fitted with a 'standard plug' in accordance with Statutory Instrument 1768:1994 - The Plugs and Sockets etc. (Safety) Regulations 1994, unless exempted by those regulations.  NOTE 'Standard plug' is defined in SI 1768:1994 and essentially means an approved plug conforming to BS 1363 or an approved conversion plug.		N
3.2.1.1	In Ireland, apparatus which is fitted with a flexible cable or cord and is designed to be connected to a mains socket conforming to I.S. 411 by means of that flexible cable or cord and plug, shall be fitted with a 13 A plug in accordance with Statutory Instrument 525:1997 - National Standards Authority of Ireland (section 28) (13 A Plugs and Conversion Adaptors for Domestic Use) Regulations 1997.		N
3.2.4	In Switzerland, for requirements see 3.2.1.1 of this annex.		N
3.2.5.1	In the United Kingdom, a power supply cord with conductor of 1,25 mm <sup>2</sup> is allowed for equipment with a rated current over 10 A and up to and including 13 A.		N
3.3.4	In the United Kingdom, the range of conductor sizes of flexible cords to be accepted by terminals for equipment with a RATED CURRENT of over 10 A up to and including 13 A is:  • 1,25 mm <sup>2</sup> to 1,5 mm <sup>2</sup> nominal cross-sectional area.		N

EN 60950-1			
Clause	Requirement - Test	Result-Remark	Verdict
4.3.6	In the United Kingdom, the torque test is performed using a socket outlet complying with BS 1363 part 1:1995, including Amendment 1:1997 and Amendment 2:2003 and the plug part of DIRECT PLUG-IN EQUIPMENT shall be assessed to BS 1363: Part 1, 12.1, 12.2, 12.3, 12.9, 12.11, 12.12, 12.13, 12.16 and 12.17, except that the test of 12.17 is performed at not less than 125 °C. Where the metal earth pin is replaced by an Insulated Shutter Opening Device (ISOD), the requirements of clauses 22.2 and 23 also apply.		N
4.3.6	In Ireland, DIRECT PLUG-IN EQUIPMENT is known as plug similar devices. Such devices shall comply with Statutory Instrument 526:1997 - National Standards Authority of Ireland (Section 28) (Electrical plugs, plug similar devices and sockets for domestic use) Regulations, 1997.		N
5.1.7.1	In Finland, Norway and Sweden TOUCH CURRENT measurement results exceeding 3,5 mA r.m.s. are permitted only for the following equipment: <ul style="list-style-type: none"> <li>• STATIONARY PLUGGABLE EQUIPMENT TYPE A that                             <ul style="list-style-type: none"> <li>○ is intended to be used in a RESTRICTED ACCESS LOCATION where equipotential bonding has been applied, for example, in a telecommunication centre; and</li> <li>○ has provision for a permanently connected PROTECTIVE EARTHING CONDUCTOR; and</li> <li>○ is provided with instructions for the installation of that conductor by a SERVICE PERSON;</li> </ul> </li> <li>• STATIONARY PLUGGABLE EQUIPMENT TYPE B;</li> <li>• STATIONARY PERMANENTLY CONNECTED EQUIPMENT.</li> </ul>		N



EN 60950-1			
Clause	Requirement - Test	Result-Remark	Verdict
6.1.2.1 ( A1:20 10)	<p>In <b>Finland, Norway and Sweden</b>, add the following text between the first and second paragraph of the compliance clause:</p> <p>If this insulation is solid, including insulation forming part of a component, it shall at least consist of either</p> <ul style="list-style-type: none"> <li>- two layers of thin sheet material, each of which shall pass the electric strength test below, or</li> <li>- one layer having a distance through insulation of at least 0,4 mm, which shall pass the electric strength test below.</li> </ul> <p>Alternatively for components, there is no distance through insulation requirements for the insulation consisting of an insulating compound completely filling the casing, so that CLEARANCES and CREEPAGE DISTANCES do not exist, if the component passes the electric strength test in accordance with the compliance clause below and in addition</p> <ul style="list-style-type: none"> <li>- passes the tests and inspection criteria of 2.10.11 with an electric strength test of 1,5 kV multiplied by 1,6 (the electric strength test of 2.10.10 shall be performed using 1,5 kV), and</li> <li>- is subject to ROUTINE TESTING for electric strength during manufacturing, using a test voltage of 1,5 kV.</li> </ul> <p>It is permitted to bridge this insulation with an optocoupler complying with 2.10.5.4 b).</p> <p>It is permitted to bridge this insulation with a capacitor complying with EN 60384-14:2005, subclass Y2.</p> <p>A capacitor classified Y3 according to EN 60384-14:2005, may bridge this insulation under the following conditions:</p> <ul style="list-style-type: none"> <li>- the insulation requirements are satisfied by having a capacitor classified Y3 as defined by EN 60384-14, which in addition to the Y3 testing, is tested with an impulse test of 2,5 kV defined in EN 60950-1:2006, 6.2.2.1;</li> </ul>		N

EN 60950-1			
Clause	Requirement - Test	Result-Remark	Verdict
	<ul style="list-style-type: none"> <li>- the additional testing shall be performed on all the test specimens as described in EN 60384-14:</li> <li>- the impulse test of 2,5 kV is to be performed before the endurance test in EN 60384-14, in the sequence of tests as described in EN 60384-14.</li> </ul>		
6.1.2.2	In Finland, Norway and Sweden, the exclusions are applicable for PERMANENTLY CONNECTED EQUIPMENT, PLUGGABLE EQUIPMENT TYPE B and equipment intended to be used in a RESTRICTED ACCESS LOCATION where equipotential bonding has been applied, e.g. in a telecommunication centre, and which has provision for a permanently connected PROTECTIVE EARTHING CONDUCTOR and is provided with instructions for the installation of that conductor by a SERVICE PERSON.		N
7.2	In Finland, Norway and Sweden, for requirements see 6.1.2.1 and 6.1.2.2 of this annex. The term TELECOMMUNICATION NETWORK in 6.1.2 being replaced by the term CABLE DISTRIBUTION SYSTEM.		N
7.3	In <b>Norway</b> and <b>Sweden</b> , for requirements see 1.2.13.14 and 1.7.2.1 of this annex.		N
7.3	In Norway, for installation conditions see EN 60728-11:2005.		N

<b>1.5.1</b>	<b>TABLE: list of critical components</b>					<b>P</b>
Object/part No.	Manufactory/trademark	Type of materials	Technical data	standard	Mark(s)of conformity <sup>1)</sup>	
P.C.B.	CHINA CIRCUIT TECHNOLOGY (SHANTOU) CORP	6	130°C min., V-0min.	UL94/UL796	UL(E99006)	

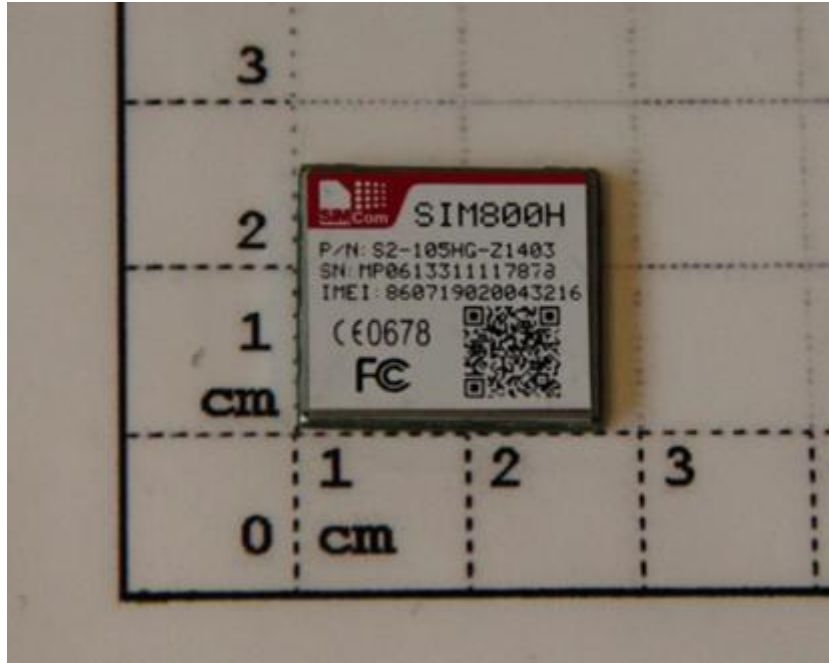
<b>1.6.2</b>	<b>Table: Electrical data(in normal conditions)</b>				<b>P</b>
U(V)	I(mA)	I rated(mA)	P(W)	Condition/status	
4.2	218	--	0.9	Max normal load	
Remarks:1. The measured input current at rated voltage shall be ≤ 110% of rated current.					

<b>4.5</b>	<b>TABLE: Heating test data</b>			<b>P</b>
A	Max Normal Load		4.2Vdc	--
Test Item		A		--
Thermocouple Locations		Ambient T <sub>mra</sub> 60°C		Limited T(°C)
PCB near U1		95.8		130
Ambient		60		--
Comment: The measure were measured under worst case normal mode as described in 1.2.2.1 and described in 1.6.1 at voltage as described in 1.6.5. With a specified ambient temperature of 60.0°C				

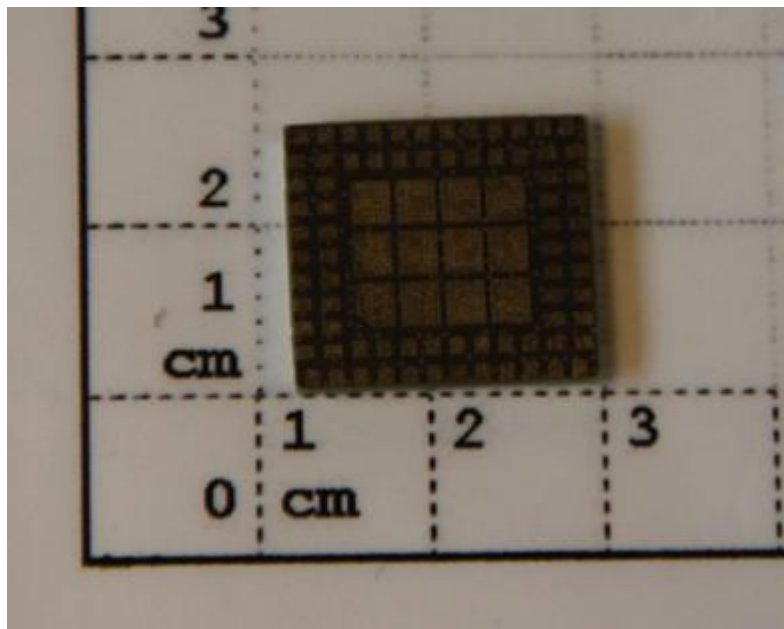
<b>5.3</b>	<b>TABLE: Abnormal Operations and Fault Conditions Test</b>						<b>P</b>
ambient temperature (°C) ..... :						See below	--
No.	Component no.	Fault	Test voltage (V)	Test time	Fuse no.	Fuse current (A)	Result
2	U2 (Pin1-Pin4)	s-c	4.2Vdc	7h	--	--	Unit operate normally No hazard. NT, NC
Supplementary information							
NC - Cheesecloth remained intact				s-c - short circuited			
NT - Tissue paper remained intact				o-c - open circuited			

Photos of the EUT

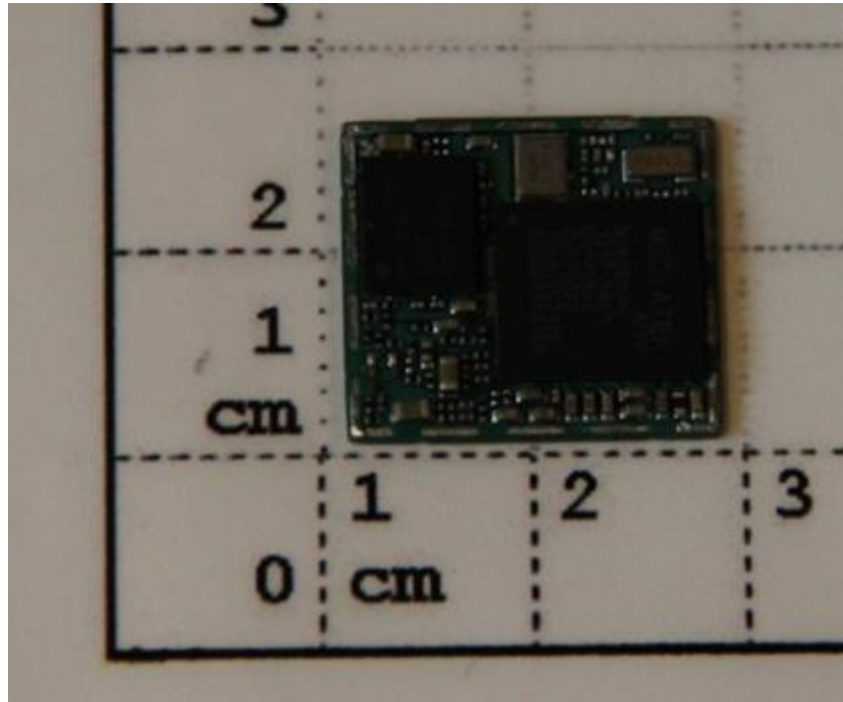
EUT, Top view



EUT, Back view



EUT, Top view



---

**The End of this Report**

---